



Textile Production & Marketing Co.

WORKWEAR

www.ismont.de





Textile Production & Marketing Co.



WHO ARE WE?

We cast on the first stitch that day, and we dress the whole world today.

That's our story!

A lot has changed since that first day. Mechanical machines were replaced by automatic ones. A small tailor's shop turned into two large plants and chain stores. Now, there is not even a single sector for which we do not manufacture workwear. A lot has changed, but one thing remained the same: The excitement and passion for work that we felt the day when we cast on that first stitch.

That's our greatest difference!

Our story as İSMONT began at a small tailor's shop in 1982. Now, we manufacture workwear for every field with more than 600 employees at our production plants in Istanbul and Akyazi, Sakarya. With our machinery with the highest production capacity in their field in Turkey...

We carry out all processes from design to pattern to cutting to embroidery to sewing to quality control to storage to shipping within our own company. We appeal to all sectors with our wide range of products consisting of workwear for industry, security, gastronomy-tourism, and health care. We develop solutions in the field of protective technical clothing with our brand İSMONTPRO, and we design clothes that add color to daily life with RELAXIA. In addition to our catalog products, we design tailored products to meet demands from all sectors, together with our design and R&D teams; develop these products using computers; and produce them through a flexible and quick system.

We carry out our production processes in accordance with the ISO 9001 quality standard processes. We manufacture various product lines according to the OEKO-TEX, CE, and EN standards and ensure that these products are certified. Our journey, which began in the field of workwear, continues through business partnerships with world-renowned safety footwear and personal protection equipment brands that we have acquired over time. We make wholesale and retail sales in our stores in Turkey and abroad, deliver our products to all parts of Turkey through our online sales channel, and export them to all over the world.

We are proud to support education and keep the names of our founders alive in the schools that we opened in Akyazi, Sakarya, in 2006 and in Nizip, Gaziantep, in 2014. This is our story of success and pride that we have written one stitch after another since 1982.

İSMONT

STORE & EUROPE OFFICE



Hüttenstr.1 40215 /Düsseldorf - 0211 301 55 890 / Mo-Fr 9:00-18:00 Sa-Su closed

www.ismont.de - info@ismont.de

HEADQUARTERS

Küçük Çamlıca Mah.
Adil Bey Sk. No:4
PK: 34696
Üsküdar/ İstanbul/Türkei
Tel: +90 216 472 73 00
ismont@ismont.com.tr
www.ismont.com.tr



OUR PRODUCTION FACILITIES

SINCE
1982

Modern, High Quality, Mass Production ...

At ISMONT, production process starts with providing unconditional customer satisfaction. Every step of the process is carried out under the control of the experienced managerial staff and is constantly being developed in order to ensure that the product is delivered with quality, faultless and fastest. Each step of the process is carried out under the supervision of experienced management personnel and is constantly being improved to ensure that the product is delivered impeccably, fast and with high quality.

During the production stages, various tests and quality control procedures are carried out in accordance with technical specifications. Inappropriate good are definitely not dispatched to the customer.

The main principle of ISMONT is based on high quality and fast production as well as continuous developing. In this regard, our works and investments continue in an increasing manner.

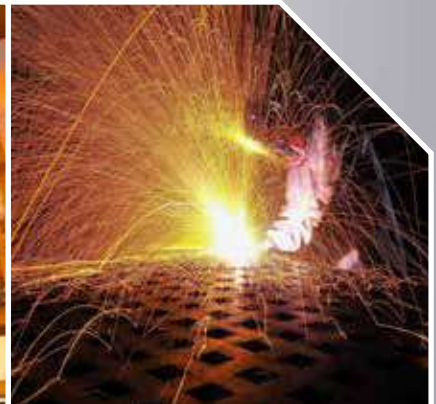


Sakarya / Akyazi Factory

40.000 m² Area with 25.000 m² Closed Area

SECTORS

Mining | Automotive | Petrochemical | Gastronomy | Tourism | Machine
| Transportation | Construction-Painting-Decoration | Repair-Renovation
| Landscape | Electronics | Logistics-Storage Agriculture-Livestock |
Forestry | Shipyards | Production | Welding Operations | Railway-Highway
| Aviation | Health Services-Pharmaceutical | Waste Management



OUR CERTIFICATES

ISO 9001
BUREAU VERITAS
Certification



Certified Production Quality

ISMONT carries out its production processes in accordance with the ISO 9001 quality standard processes and manufactures various product lines according to the OEKO-TEX, CE, and EN standards and ensure that these products are certified.



With Oeko-Tex Certificate, Your Health is Secure!

Oeko-Tex offers textile and apparel companies a standard and scientific benchmark for evaluating potential problem materials. The tests evaluate the suitability of textile quality for human ecology within the scope of determined criteria. Clothing and other textile products that do not harm the skin can use the Oeko-Tex label after passing these tests. As ISMONT, we manufacture all our textile products within the scope of Oeko-Tex standards.





Respect to Employees

ISMONT has adopted the BSCI Code of Conduct and committed to fulfilling its responsibilities for respecting human rights within the principles and spheres of influence specified in the document it has.



Environmental Management System Certificate

ISMONT within the scope of ISO 14001 Environmental Management System, attaches importance to the protection of the environment, efficient use of resources, full compliance with the law and prevention of pollution, separation of wastes generated during its activities, recycling and disposal with the most appropriate methods.



Occupational Health and Safety Management System Certificate

ISMONT accepts people as the most valuable asset in all its activities, creates a safer and healthier working environment, adopts minimizing all kinds of losses and continuously improving it as its primary business goal, and maintains its processes in accordance with the ISO 45001 Occupational Health and Safety Management System.



STANDARDS



EN 13034

EN 13034

Chemical Protective Clothing



EN 1149-5

EN 1149-5

Protective clothing against electrostatic discharge



EN 61340-5-1

EN 61340

Clothing for the protection of electronic components and devices from electrostatic discharge



EN 11612

EN ISO 11612

Kleidung zum Schutz vor umschließender Flamme und Strahlungswärme



EN 14116

EN ISO 14116

Clothing for protection against engulfing flames and radiant heat



EN 11611

EN ISO 11611

Protective clothing used for welding and/or related processes



EN 469

EN 469

Protective clothing for firefighters



CEI EN 61482

IEC EN 61482

Protective clothing for workers exposed to electrical arcs



EN 342

EN 342

Protective clothing for cold environments (temperatures ranging from -5°C to -40°C)



EN 343

EN 343

Protective clothing for protection against rain, mist, and ground moisture



EN 20471

EN ISO 20471

High-Visibility clothing

CATEGORIES



MANAGER VEST



ISM 5804

130 g

Manager Vest

- Zipper closure
- 50mm reflective tapes on front, back, chest and shoulders
- Flap phone pocket, pen pocket and D buckle on the right chest
- PVC name badge on the left chest and hook.
- Top flap pockets

Fabric: 100% Polyester - 130 g/m²

Certificate: EN ISO 13688:2013, EN ISO 20471:2013/A1:2016 Class 1

Colour: Neon Yellow/Navy, Neon Yellow/Royal Blue, Neon Orange/Navy

Sizes: XS-3XL



EN ISO
20471



ISM 5805

Technician Vest Two-Tone

130 g

- Zipper closure
- 50mm reflective tapes on front, back, chest and shoulders
- Flap phone pocket, pen pocket and D buckle on the left chest
- PVC name badge on the right chest and hook.
- Top flap pockets

Fabric: 100% Polyester - 130 g/m²

Certificate: EN ISO 13688:2013, EN ISO 20471:2013/A1:2016 Class 1

Colour: Neon Yellow, Neon Orange

Sizes: XS-3XL



EN ISO
20471

130 g



ISM 5801

ISM 5801

Reflective Vest - Double Strip

- Velcro closure
- 50 mm reflective tapes on the front and back

Fabric: 100% Polyester - 130 g/m²

Certificate: EN ISO 13688:2013
EN ISO 20471:2013/A1:2016 Class 1

Colour: Neon Yellow, Neon Orange

Sizes: S-3XL

ISM 5802

HI-VIS Reflective Vest

- Velcro closure
- 50 mm reflective tapes on the front and back

Fabric: 100% Polyester - 130 g/m²

Certificate: EN ISO 13688:2013
EN ISO 20471:2013/A1:2016 Class 2

Colour: Neon Yellow, Neon Orange

Sizes: S-3XL



ISM 5802

130 g



ISM 5806

ISM 5806

Technician Vest

- Zipper closure
- 50mm reflective tapes on front, back, chest and shoulders
- Flap phone pocket, pen pocket and D buckle on the left chest
- PVC name badge on the right chest
- Top flap pockets

Fabric: 100% Polyester - 130 g/m²

Certificate: EN ISO 13688:2013, EN ISO 20471:2013/A1:2016 Class 2

Colour: Neon Yellow, Neon Orange

Sizes: S-3XL

ISM 5803

Formen Vest

- Zipper closure
- 50mm reflective tapes on front, back, chest and shoulders
- Flap phone pocket, pen pocket and D buckle on the right chest
- PVC name badge on the left chest.
- Top flap pockets

Fabric: 100% Polyester - 130 g/m²

Certificate: EN ISO 13688:2013

EN ISO 20471:2013/A1:2016 Class 1

Colour: Navy/Neon Yellow

Sizes: XS-3XL



ISM 5803

130 g



ISM 5810

ISM 5810

Tech Mesh Detailed Executive Vest

- Top is mesh, bottom is plain fabric
- Zipper closure
- 2 rows of 50 mm reflective tapes on the front and back
- PVC name badge on the right chest
- Phone pocket, pen pocket and D buckle on the left chest

Fabric: 100% Polyester

Mesh: 150 g/m² Rachel: 125 g/m²

Certificate: EN ISO 20471 Class 3, EN ISO 13688:2013

Colour: Neon Yellow, Neon Orange

Sizes: XS-3XL

ISM 5809

Trendy Mesh Detailed Warning Vest

- Top is mesh, bottom is plain fabric
- Velcro closure
- 2 rows of 50 mm reflective tapes on the front and back
- PVC name badge

Fabric: 100% Polyester

Mesh: 150 g/m² Rachel: 125 g/m²

Certificate: EN ISO 20471 Class 1, EN ISO 13688:2013

Colour: Neon Yellow, Neon Orange

Sizes: XS-3XL



EN ISO
20471

ISM 5809



Navy

Red

Blue

Green

Royal Blue



ISM 5807

Basic Warning Vest

- Velcro closure
- 50 mm reflective tapes on the front and back

Fabric: 100% Polyester

Colour: Royal Blue, Green, Blue, Red, Navy

Sizes: S-3XL



ISM 5808

Chief Vest

- Zipper closure
- 50mm reflective tapes on front, back, chest and shoulders
- Phone pocket, pen pocket and D buckle on the left chest
- PVC name badge on the right chest
- Top flap pockets

Fabric: 100% Polyester

Colour: Royal Blue, Green, Blue, Red, Navy

Sizes: XS-3XL

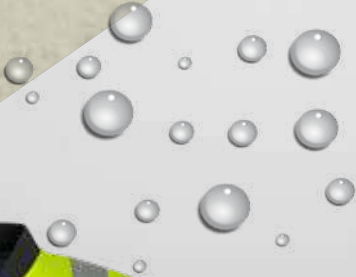
HI-VIS CLOTHING



NEW

190 g

300D
OXFORD WEAVE



YL201-02



YL201-03



Reversible clothing for versatile use

YL201-02 NEON YELLOW

YL201-03 NEON ORANGE

Hi-Vis Quilted Double-Sided Vest

- Can be used double-sided
- Ribbed collar (35 mm)
- Zipper closure system (bone teeth)
- 50 mm reflective tapes on front, back body and arms
- Large front pockets with flap and hook and loop fastening
- Quilted inner lining
- Top inner pockets inside

Outer Fabric: 100% Polyester, 300 Denier, PU Coated - 200 g/m²

Filling: Fibre - 200 g/m²

Certificate: EN ISO 20471 Class 2

Colour: Neon Yellow, Neon Orange

Body: S-XXL



EN ISO
20471

01 M058-02

Warning Vest Two-Tone

- Two-colour new model
- Zipper closure
- Pen pocket on right chest next to flap top pocket
- ID pocket over phone pocket on left chest
- Pockets on the front right and left
- Front pockets, hem and collar are made of garni fabric
- Reflective tapes on shoulders, waist and hem

Fabric: 85% Polyester, 15% Cotton - 275 g/m²

Certificate: EN ISO 13688:2013, EN ISO 20471:2013/A1:2016 Class 1

Colour: Neon Yellow/Navy, Neon Orange/Navy

Sizes: S-XXL



EN ISO
20471



01 M058-02

HI-VIS CLOTHING

“Be Seen, Stay Safe:
Illuminate Your Presence with Hi-Vis Tees!”





185 g



Front and back printed with reflective strips.

ISM 6000

Reflective Hi-Vis Polo T-Shirt

- Grey polo neck
- 50 mm reflective serration prints on front-rear body and back shoulders

Fabric: 53% Cotton 47% Polyester

Colour: Neon Orange, Neon Yellow

Sizes: XS-3XL

HI-VIS CLOTHING



ISM 6613

ISM 6613

Hi-Vis Long Sleeve Polo Shirt

- Two-Tone Dynamic Design
- Two button plackets
- Front-back body, sleeves and shoulders with 50 mm reflective bands

Fabric: 53% Cotton, 47% Polyester

Certificate: CE, EN ISO 20471 Class 2, EN ISO 13688

Colour: Yellow/Navy

Size: XS-3XL

ISM 6614

Hi-Vis Polo Shirt

- Two-Tone Dynamic Design
- Two button plackets
- Front-back body, sleeves and shoulders with 50 mm reflective bands

Fabric: 53% Cotton, 47% Polyester

Certificate: CE, EN ISO 20471 Class 1, EN ISO 13688

Colour: Yellow/Navy Size: XS-3XL



ISM 6614

The high-visibility sweatshirt is an ideal mid-layer for situations where the weather is too cold for just a shirt but not cold enough for a jacket.

ISM 6010

Hi-Vis Reflective Sweatshirt

- Crew neck
- Ribbed collar, armholes and hem
- 50mm reflective tapes on front, back and shoulders

Fabric: 58% Polyester 42% Cotton - 330 g/m²

Colour: Neon Orange, Neon Yellow

Size: XS-3XL



3

EN ISO
20471



280 g

LODOS Hi-Vis Fleece Jacket



ISM 3823

LODOS Hi-Vis Fleece Jacket

- 50 mm reflective tapes on front, back body and arms
- Zippered side pockets
- Elastic cuffs

Fabric: 100% Polyester

Certificate: EN ISO 20471 Class 3,
EN ISO 13688:2013

Colour: Neon Orange, Neon Yellow

Sizes: S-XXL



EN ISO
20471



ISM 3820

STYLE Softshell Jacket

- Hi-Vis Softshell Jacket
- Reflective tapes on front, back body and arms
- Zipped side pockets
- Zipped pocket on chest
- Cord + stopper at hem
- Breathable, windproof

Fabric: 100% Polyester

Certificate: EN ISO 20471 Class 2, EN ISO 13688:2013

Colour: Neon Orange, Neon Yellow

Sizes: S-XXL



HI-VIS CLOTHING



ISM 3822

ISM 3822

ICON HI-VIS Fleece Jacket

- Zipper closure
- 50 mm reflective tapes on front, back body, shoulders and arms
- Internal zipper pockets on the sides
- Mesh lining inside

Outer Fabric: Fleece 100% Polyester, 280 g/m²

Lining: Mesh 100% Polyester

Colour: Neon Yellow/Anthracite, Neon Orange/Black

Sizes: XS-3XL



ISM 3821

MILAS HI-VIS Softshell Jacket

- Zipper closure
- Hooded (zip design, detachable)
- Shoulders, hooded and collar are made of garni colour
- Serrated prints from 50 mm reflective foil on the front, back, shoulders and sleeves
- Inside pockets with zippers on the sides
- Internal pocket with a zipper on the right chest
- Armrests with velcro, adjustable
- Collapsible hem (rubber cord + stopper), adjustable

Fabric: HI-VIS, Softshell, 100% Polyester, 300 g/m²

Colour: Neon Yellow/Black

Sizes: XS-3XL



ISM 3821



ISM 3832

CUSTOM PRODUCTION

ISM 3832

NIZIP HI-VIS Sweat Jacket

- Zipper closure
- 50 mm reflective tapes on front, back body and shoulders
- Internal zipper pockets on the sides and left chest

Neon Fabric: 58% Polyester 42% Cotton - 330 g/m²

Garni Fabric: 100% Cotton - 290 g/m²

Colour: Neon Yellow/Anthracite

Sizes: XS-3XL

ISM 3831

SYMRNA HI-VIS Fleece Jacket

- Zipper closure
- 50 mm reflective tapes on front, back body and shoulders
- Internal zipper pockets on the sides and left chest

Fabric: Fleece, 100% Polyester

Garni Fabric: Fleece 100% Polyester

Colour: Navy/Neon Yellow

Sizes: XS-3XL



ISM 3831

CUSTOM PRODUCTION

245 g

NEW

ISM 1007

OTTOMAN HI-VIS Trousers

- Elastic Waist
- Double Top Pocket on Back
- Cargo Pocket on the Left Side
- Tool Pocket on the Right Side
- Knee Pad Pocket
- 50 mm Reflective Tapes
- Clip

Fabric: 65% Polyester, 35% Cotton - 245 g/m²

Certificate: EN ISO 20471
Class 2, EN ISO 13688:2013

Colour: Neon Yellow/Navy

Sizes: XS-3XL



ISM 1002

CUSTOM PRODUCTION

ICON HI-VIS Two-Tone Trousers

- Front zipper
- Elastic back waist
- Side pockets, D buckle on right side
- Double row of 50 mm 3M™ reflective tape on the hems
- Cargo pockets with flaps on both sides
- Two pockets on the back
- Tool pocket on right leg
- Knee pad slots

Fabric: 65% Polyester, 35% Cotton - 245 g/m²

Colour: Neon Orange/Black



HI-VIS CLOTHING

5x1

5 in 1 Coat

200 g

1

All-in-One Use



300D
OXFORD WEAVE

300D Oxford fabric is a durable type of polyester fabric. The 'D' stands for denier, indicating that the fabric has a density of 300 denier. Oxford fabric is produced using a special weaving technique.



2

**Outer Coat,
Single Use**



3

**Outer Jacket and
Inner Vest,
Sleeveless**



4

**Inner Jacket,
Single Use**



5

**Inner Jacket
may use
as a Vest**

KB103-02

KB103-02 - Cold Plus HI-VIS 5 in 1 Two-Tone Coat

Outer Coat:

- Zipper closure system (double-way zipper, bone teeth)
- Concealed zip pocket underneath the windscreen with snap fastener
- Concealable hood
- Snaps on cuffs
- Phone pocket on right chest
- 50 mm reflective tapes on front, back body and arms
- Large velcro pockets with flap in front
- Right inner pocket
- Mesh inner lining

Inner Coat:

It is mounted inside the outer coat with a zipper at the front and fastened with the fixing elastics on the neck and armholes.

- Pockets on the sides, inner pocket on the left
- 50 mm reflective tapes on front, back body and arms
- It can be used as a vest by removing the zippered arms.
- Quilted sleeves with cotton surface, polyester inner lining
- Ribbed cuffs

Fabric Coat:

Outer Surface: 100% Polyester 300 Denier PU Coated - 200 g/m²

Inner Lining: Mesh 100% Polyester

Jacket:

Outer Surface: 100% Polyester 300 Denier PU Coated - 200 g/m²

Inner Lining: Fleece 100% Polyester

Sleeves: Woven quilted filling - 200 g/m²

Certificate: EN 343-3-3, EN ISO 20471 Class 3



EN 343



EN ISO
20471



HI-VIS CLOTHING



Norther HI-VIS Two-Tone Coat



200 g

KB102-02

KB102-02 YELLOW/NAVY BLUE

KB102-04 RED/NAVY BLUE

KB102-03 ORANGE/NAVY BLUE

Norther HI-VIS Two-Tone Coat

- Zipper closure system (double-way zipper, bone teeth)
- Concealed zip pocket underneath the windscreen with snap fastener
- Concealable hood
- Snaps on cuffs
- 50 mm reflective tapes on front, back body and arms
- Large velcro pockets with flap in front
- Right inner pocket

Fabric:

Outer Surface: 100% Polyester 300 Denier PU Coated - 200 g/m²

Inner Filling: Fibre - 200 g/m²

Certificate: EN 343-3-3, EN ISO 20471 Class 3



EN 343

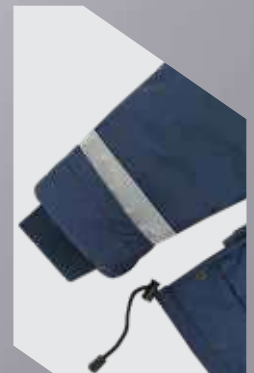


EN ISO
20471



KB102-04

KB102-03



Hidden cuffs



Inner pocket

HI-VIS CLOTHING

KB101-01 NAVY

KB101-03 ORANGE

KB101-02 YELLOW

Norther HI-VIS Single-Tone Coat

- Zipper closure system (double-way zipper, bone teeth)
- Concealed zip pocket underneath the windscreen with snap fastener
- Concealable hood
- Black fleece lining on the inside of the collar
- Concealed rib at cuffs
- 50 mm reflective tapes on front, back body and arms
- Phone pocket on left chest
- Nameplate on right chest
- Pocket on left sleeve
- Large velcro pockets with flap in front
- Right inner pocket

200 g



KB101-01

KB101-03

KB101-02

300D
OXFORD WEAVE



EN 343



EN ISO
20471

3

Fabric:

Outer Surface: 100% Polyester 300 Denier
PU Coated - 200 g/m²

Inner Filling: Fibre - 200 g/m²

Inner collar: Fleece 100% Polyester

Certificate: EN 343-3-3, EN ISO 20471 Class 3



Norther HI-VIS Single-Tone Coat



HI-VIS CLOTHING

145 g

ISM 2901

ISM 2900

ISM 2900

ISM 2900 YELLOW

ISM 2900 ORANGE

ISM 2901 NAVY

Poyraz Rain Jacket with Reflector

- Zipper closure
- Reflective tapes on the front, back and arms
- 2 pockets for secure storage
- Concealable hood
- Elasticised cuffs

Shell Fabric: 100% Polyester PVC Coating - 200 g/m²

Lining Fabric: 100% Polyester Mesh on the Neck - 60 g/m²

Certificate: EN ISO 20471 Class 3, EN 343:2019, EN ISO 13688:2013 (Navy: EN 343:2019, EN ISO 13688:2013)

Colour: Neon Yellow, Neon Orange, Navy

Sizes: S-3XL



“Use as a set for staying completely dry!”

ISM 2801 YELLOW

ISM 2801 ORANGE

ISM 2802 NAVY

Poyraz Rain Trousers with Reflector

- Generous fit for wearer comfort
- Waterproof with taped seams preventing water penetration
- Elasticised waist
- Double rows of reflective tapes on the leg bottom hems

Fabric: 100% Polyester PVC Coating - 200 g/m²

Certificate: EN ISO 20471 Class 3, EN 343:2019, EN ISO 13688:2013 (Navy: EN 343:2019, EN ISO 13688:2013)

Colour: Neon Yellow, Neon Orange, Navy

Sizes: S-3XL



ISM 2801

ISM 2802

ISM 2801



PVC COATING

PVC coating is a process in which a plastic coating called Polyvinyl Chloride (PVC) is applied to a material. This coating is used for various reasons, such as protecting the material, enhancing durability, or creating an aesthetic appearance. PVC is a water- and chemical-resistant, easy-to-clean, and durable plastic material. PVC coating can be performed using PVC films, sheets, or coating materials.

145 g

NEW



ISM 2900-U

Poyraz Long Hi-Vis Rain Jacket

- Front zippered, waterproof, and windproof
- Reflective bands on front, back body, and sleeves
- 2 side pockets
- Concealable hood
- Hidden elastic sleeve cuffs

Fabric: 100% Polyester, PVC Coating - 145 gr/m²

Certificate: CE, EN ISO 20471 Class 3, EN 343:2019

Colour: Yellow

Size: XS-3XL



EN 343



EN ISO
20471



EN 343

This standard classifies the properties of materials and seams of protective clothing designed for protection against rain, mist, and ground moisture in order to ensure an adequate level of performance. The focus is on waterproofness and water vapor resistance (breathability)

145 g

NEW



ISM 2901-U

Poyraz Long Rain Jacket

- Front zippered, waterproof, and windproof
- Reflective bands on front, back body, and sleeves
- 2 side pockets
- Concealable hood
- Hidden elastic sleeve cuffs

Fabric: 100% Polyester, PVC Coating - 145 gr/m²

Certificate: EN 343:2019

Colour: Navy

Size: XS-3XL



EN 343



HEAT PROTECTIVE CLOTHING

There are different types of flame-resistant workwear, and each of them must adhere to different regulations to ensure the operator's safety in various work environments. Each specific regulation guarantees the performance characteristics that each garment must meet in order to protect the worker from potential hazards related to fire and excessive heat.

Flame-resistant clothing is essentially designed to protect the body from heat and flames. There are various types of flame-resistant clothing, each with targeted properties depending on the risks the wearer may face. Each type of clothing is governed by additional regulations that further specify their performance characteristics. These include:

- Protective clothing against limited flame spread
- Protective clothing against heat and flames
- Protective clothing for welding and related processes
- Workwear for firefighters
- Workwear for forest and/or vegetation fires
- Workwear for oil and gas operators





EN ISO 14116 - PROTECTIVE CLOTHING AGAINST LIMITED FLAME SPREAD

EN ISO 14116 specifies performance requirements for materials, material assemblies, and protective clothing with limited flame spread. Protective clothing according to EN 14116 is intended to protect the wearer against occasional and brief contact with heat or flames. The aim is to reduce the possibility that a garment would ignite when briefly exposed to small flames, in situations where there are no significant flame or excessive heat hazards. For prolonged exposure to heat, additional protection should be used.



EN ISO 11612: PROTECTIVE CLOTHING – CLOTHING TO PROTECT AGAINST HEAT AND FLAME

This standard defines the performance requirements for garments designed to protect the wearer (excluding hands) from heat and/or flame. The performance requirements set forth in this international standard are applicable to garments that have limited flame propagation properties and are intended for use where the wearer may be exposed to radiant, convective or contact heat or splashes of molten metal. This test uses standard methods and conditions to predict the performance of fabrics/clothes in contact with heat or flame. In addition to the fabric, the sewing, logo and closure systems used in the dress should also be tested. Tests should be performed on pre-machined components according to the manufacturer's care label.



EN ISO 11611: PROTECTIVE CLOTHING - PROTECTIVE CLOTHING USED IN WELDING AND RELATED PROCESSES

This type of protective clothing is intended to protect the user against small splashes of molten metal, short contact with flame, and radiant heat. This international standard defines the minimum basic requirements and test methods for protective clothing (excluding hand protection) used in welding and similar work. This standard defines two classes with specific performance requirements.



IEC 61482: PROTECTIVE CLOTHING – PROTECTIVE CLOTHING AGAINST THE THERMAL EFFECT OF ELECTRIC ARC

This standard specifies requirements and test methods for protective clothing and materials used against the thermal effects of an electric arc. An electric arc is a continuous electrical discharge of high current between conductors that produces very bright light and intense heat. The electric arc releases much more energy on the surface of the protective clothing for a short time than an open flame. Two international test methods have been developed to provide information on the resistance of clothing to the thermal effects of electric arcs. Each method gives different information. One or both must be done to comply with the standards.

TECHNICAL TEXTILE PRODUCTS



We use Nomex®, which has the unique heat and flame resistance of DUPONT™ in the non-flammable products category of our ISMONTPRO brand.



Nomex® is a heat and flame-resistant fibre that does not melt, drip or promote combustion, protecting its users by providing a superior barrier to hazards. The work clothes we produce with Nomex® provide superior heat, flame and arc flash protection while also offering lightweight, comfortable solutions that meet or exceed industry standards.

Nomex® brand fibre is used in a wide range of applications but is perhaps best known for its role as a critical component of protective clothing. Today, more than three million fire-fighter suits, other clothing and accessories around the world are protected with the unique flame protection, durability and comfort provided by Nomex®. Nomex® is also used in clothing worn by military and police forces, auto racing drivers, track crew members and officers, and workers in danger of flash fires and electric arcs.

Important Advantages for Nomex®



Does not melt, does not drip



Dry Feeling



Light



Chemical Free



Resistant



Antistatic



DUPONT™'s Thermo-Man® units, the world's most advanced life-size thermal burn assessment system, use the latest technology that proves the durability and superior flame resistance properties of Nomex® fabric compared to other flame-resistant solutions.

Thermal Burn Evaluation System

12

Flame Units

1,800

Degrees

122

Sensors

After 4 Second Thermo-Man Exposure



Nomex® Comfort
220 gr/m²

Nomex® Comfort
260 gr/m²

FR Cotton/PA 88/%12
237 gr/m²

FR Cotton/PA 88/%12
305 gr/m²

FR Cotton %100
335 gr/m²



ISS4825

ISMONTPRO Nomex® Flame Resistant Shirt

ISS1003

ISMONTPRO Nomex® Flame Resistant Trousers

EN 11612 A1 A2 B1 C1 F1

Heat and Flame Protective Clothing

EN 1149-5

Electrostatic Properties

Chapter 5: Material Performance and Design Features

IEC 61482 Class 1

Protective Clothing against Electric Arc Thermal Risk

Fabric Additional Features:

IEC 61482-1-1 ATPV: 6.1 cal/cm²

Water and Oil Repellent

Fabric Information:

Flame Retardant & Antistatic - 205 g/m²

- **93% Meta-aramid**
- **5% Para-aramid**
- **2% Antistatic**

Accessories:

- Flame retardant and anti-static fabric
- 100% Meta-aramid 3-ply sewing threads
- Flame retardant zipper
- Flame retardant velcro tapes
- Flame retardant reflective strips with 50 mm aramid back surface

Shirt Technical Information:

- Concealed front closure with snap fastener
- Pockets with flaps on the right and left chest
- Front and back reflective strips
- Cuffed sleeve mouths
- Pockets on sleeves
- Pictogram printing on the right arm (according to the finished product certificate)

Trousers Technical Information:

- Front zipper
- Elastic at the back of the waist
- Internal side pockets
- Bellows cargo pockets with flaps on the sides of the legs
- Flame retardant reflective strips at knee level
- Double pockets with flaps on the back
- Pictogram printing on the right pocket flap (according to the finished product certificate)

Washing and Usage Suggestions:

- Maximum washing temperature should be 40 °C
- Hand washable
- Industrial cleaning is possible
- Dry cleanable
- All velcro, zippers and pockets must be closed
- Clothes should be washed separately
- Bleaching material should not be used
- Reflective strip part should never be ironed



ISW6611 ISMONTPRO Nomex® Flame Resistant Polo shirt

Fabric Additional Features:

EN 11612 A1 A2 B1 C1 F1

Heat and Flame Protective Clothing

EN 1149-5

Electrostatic Properties

Chapter 5: Material Performance and Design Features

IEC 61482-1-2 Class 1

Protective Clothing against Electric Arc Thermal Risk

EN 11611 A1 and A2, Class 1

Protective Clothing Used in Welding and Related Processes

Fabric Information:

Flame Retardant & Antistatic, PLANCK – 240 g/m²

- **78% Viscose FR**
- **20% Para-aramid**
- **2% Antistatic**

Accessories:

- Flame retardant and anti-static fabric
- 100% Meta-aramid 3-ply sewing threads
- Flame retardant reflective strips with 50 mm aramid back surface

Technical information:

- Front 3-button placket
- Ribbed cuffs
- Flame retardant reflective strips on shoulders and arms
- Pictogram printing on the right arm (according to the finished product certificate)

Washing and Usage Suggestions:

- Maximum washing temperature should be 40 °C
- Hand washable
- Industrial cleaning is possible
- Dry cleanable
- All Velcro, zippers and pockets must be closed
- Clothes should be washed separately
- Bleaching material should not be used
- Reflective strip part should never be ironed





ISW1301-PT ISMONTPRO Nomex® Flame Resistant Arc Jacket

Ready Made Product CE Certification:

IEC 61482-1-2 Class 2

Protective Clothing against Electric Arc Thermal Risk

Fabric Additional Features:

EN 11612 A1 A2 B1 C1 F1

Heat and Flame Protective Clothing

EN 1149-5

Electrostatic Properties

Chapter 5: Material Performance and Design Features

EN 11611 A1 and A2, Class 1

Protective Clothing Used in Welding and Related Processes

IEC 61482-1-1 ATPV: 8.2 cal/cm²

Water and Oil Repellent

Fabric Information:

NOMEX 225 Ripstop, Dope Dyed - 225 g/m²

Flame Retardant & Antistatic

- **93% Meta-aramid**
- **5% Para-aramid**
- **2% Antistatic**

Accessories:

- Flame retardant and anti-static fabric
- 100% Meta-aramid 3-ply sewing threads
- Flame retardant zipper
- Flame retardant velcro tapes
- Flame retardant reflective strips with 50 mm aramid back surface

Technical information:

- Zippered windscreen with Velcro on the front
- Pockets with flaps on the right and left chest
- Side pockets with protective flaps
- Flame retardant reflective strips on front and back body, shoulders and arms
- Elastic sleeve cuffs (adjustable with Velcro fasteners)
- Pencil pocket on the left arm
- Pictogram printing on the right arm (according to the finished product certificate)

Washing and Usage Suggestions:

- Maximum washing temperature should be 40 °C
- Hand washable
- Industrial cleaning is possible
- Dry cleanable
- All Velcro, zippers and pockets must be closed
- Clothes should be washed separately
- Bleaching material should not be used
- Reflective strip part should never be ironed



ISW1001-PT ISMONTPRO Nomex® Flame Resistant Arc Trousers

Ready Made Product CE Certification:

IEC 61482-1-2 Class 1

Protective Clothing against Electric Arc Thermal Risk

Fabric Additional Features:

EN 11612 A1 A2 B1 C1 F1

Heat and Flame Protective Clothing

EN 1149-5

Electrostatic Properties

Chapter 5: Material Performance and Design Features

EN 11611 A1 and A2, Class 1

Protective Clothing Used in Welding and Related Processes

IEC 61482-1-1 ATPV: 8.2 cal/cm²

Water and Oil Repellent

Fabric Information:

NOMEX 225 Ripstop, Dope Dyed - 225 g/m²

Flame Retardant & Antistatic

- **93% Meta-aramid**
- **5% Para-aramid**
- **2% Antistatic**

Accessories:

- Flame retardant and anti-static fabric
- 100% Meta-aramid 3-ply sewing threads
- Flame retardant zipper
- Flame retardant Velcro tapes
- Flame retardant reflective strips with 50 mm aramid back surface

Technical information:

- Front zipper
- Elastic at the back of the waist
- Internal side pockets
- Bellows cargo pockets with flaps on the sides of the legs
- Flame retardant yellow-grey-yellow reflective strips at knee level
- Double pockets with flaps on the back
- Pictogram printing on the right pocket flap (according to the finished product certificate)

Washing and Usage Suggestions:

- Maximum washing temperature should be 40 °C
- Hand washable
- Industrial cleaning is possible
- Dry cleanable
- All Velcro, zippers and pockets must be closed
- Clothes should be washed separately
- Bleaching material should not be used
- Reflective strip part should never be ironed



ISW4501-PT ISMONTPRO Nomex® Flame Resistant Coat

Ready Made Product CE Certification:

EN 11612 A1 A2 B1 C1

Heat and Flame Protective Clothing

EN 1149-5

Electrostatic Properties

Chapter 5: Material Performance and

Design Features

Fabric Additional Features:

IEC 61482-1-2 Class 1

IEC 61482-1-1 ATPV: 6.1 cal/cm²

Against Electric Arc Thermal Risk

Protective Clothing

Water and Oil Repellent

Inner Lining: 50% Meta-aramid,

45% Viscose FR 5% Para-aramid

Heat Barrier: 100% Aramid Felt

Moisture Barrier: PU Moisture Barrier

Accessories:

- Flame retardant and antistatic fabric
- 100% Meta-aramid 3-ply sewing threads
- Flame retardant zipper
- Flame retardant velcro tapes
- Flame retardant reflective strips with 50 mm aramid back surface

Technical information:

- Zippered windscreen with velcro on the front
- Top pockets with flaps on the chest
- Flame retarded reflective strips on front and back body and arms
- Hoodie
- Pictogram printing on the right arm (according to the finished product certificate)

Washing and Usage Suggestions:

- Protective Properties valid for 50 washes
- Maximum washing temperature should be 40 °C
- Hand washable
- Industrial cleaning is possible
- Dry cleanable
- All Velcro, zippers and pockets must be closed.
- Clothes should be washed separately
- Bleaching material should not be used.
- Reflective strip part should never be ironed.





ISW0402-PT ISMONTPRO Nomex® Flame Resistant Coverall

Ready Made Product CE Certification:

EN 11612 A1 A2 B1 C1 F1

Heat and Flame Protective Clothing

EN 1149-5

Electrostatic Properties

Chapter 5: Material Performance and Design Features

IEC 61482 Class 1

Protective Clothing against Electric Arc Thermal Risk

Fabric Additional Features:

IEC 61482-1-1 ATPV: 6.1 cal/cm2

Water and Oil Repellent

Fabric Information:

NOMEX 205 Dope Dyed - 205 g/m2

Flame Retardant & Antistatic

- **93% Meta-aramid**
- **5% Para-aramid**
- **2% Antistatic**

Accessories:

- Flame retardant and antistatic fabric
- 100% Meta-aramid 3-ply sewing threads
- Flame retardant zipper
- Flame retardant Velcro tapes
- Flame retardant reflective strips with 50 mm aramid back surface

Technical information:

- Concealed front closure with snap fastener
- Pockets with flaps on the right and left chest
- Flame retarded reflective strips on the front and back body
- Pictogram printing on the right arm (according to the finished product certificate)

Washing and Usage Suggestions:

- Maximum washing temperature should be 40 °C
- Hand washable
- Industrial cleaning is possible
- Dry cleanable
- All velcro, zippers and pockets must be closed
- Clothes should be washed separately
- Bleaching material should not be used
- Reflective strip part should never be ironed



ISW0403-PT ISMONTPRO Nomex® Flame Resistant Coverall

Ready Made Product CE Certification:

EN 11612 A1 A2 B1 C1 F1

Heat and Flame Protective Clothing

EN 1149-5

Electrostatic Properties

Chapter 5: Material Performance and Design Features

IEC 61482 Class 1

Protective Clothing Against Electric Arc Thermal Risk

Fabric Additional Features:

IEC 61482-1-1 ATPV: 6.1 cal/cm2

Water and Oil Repellent

Fabric Information:

NOMEX 205, Dope Dyed - 205 g/m2

Flame Retardant & Antistatic

- **93% Meta-aramid**
- **5% Para-aramid**
- **2% Antistatic**

Accessories:

- Flame retardant and anti-static fabric
- 100% Meta-aramid 3-ply sewing threads
- Flame retardant zipper
- Flame retardant Velcro tapes
- Flame retardant reflective strips with 50 mm aramid back surface

Technical information:

- Concealed front closure with snap fastener
- Pockets with flaps on the right and left chest
- Flame retardant reflective strips on the front and back body
- Pictogram printing on the right arm (according to the finished product certificate)

Washing and Usage Suggestions:

- Maximum washing temperature should be 40 °C
- Hand washable
- Industrial cleaning is possible
- Dry cleanable
- All velcro, zippers and pockets must be closed
- Clothes should be washed separately
- Bleaching material should not be used
- Reflective strip part should never be ironed





ISS0401

ISMONTPRO Flame Resistant Coverall (Summer)

Fabric Additional Features:

EN 11612 A1 A2 B1 C1 F1

Heat and Flame Protective Clothing

EN 1149-5

Electrostatic Properties

Chapter 5: Material Performance and Design Features

IEC 61482-1-1 ATPV: 7.3 cal/cm²

IEC 61482-1-2 Class 1

Protective Clothing against Electric Arc Thermal Risk
Water and Oil Repellent

Fabric Information:

FLAMETUFF 200 AS - 200 g/m²

Flame Retardant & Antistatic

- **87% Cotton**
- **12% Nylon**
- **1% Antistatic**

Accessories:

- Flame retardant and antistatic fabric
- 100% Meta-aramid 3-ply sewing threads
- Flame retardant zipper
- Flame retardant Velcro tapes
- Flame retardant reflective strips with 50 mm aramid back surface

Technical information:

- Front zipper
- Front pockets with protective flaps
- Bellows cargo pocket with flap on left leg side
- Elastic at the back of the waist
- Double pockets with flaps on the back
- Flame retardant reflective strips on front, back, legs and arms
- Elastic cuffs (adjustable with Velcro)
- Pictogram print on the right arm (according to the finished product certificate)

Washing and Usage Suggestions:

- Maximum washing temperature should be 40 °C
- Hand washable
- Industrial cleaning is possible
- Dry cleanable
- All Velcro, zippers and pockets must be closed
- Clothes should be washed separately
- Bleaching material should not be used
- Reflective strip part should never be ironed



ISS1302

ISMONTPRO Jacket “Prime” Flame Resistant (Summer)

ISS1002

ISMONTPRO Trousers “Prime” Flame Resistant (Winter)

Ready Made Product CE Certification:

EN 11612 A1 A2 B1 C1 F1

Heat and Flame Protective Clothing

EN 1149-5

Electrostatic Properties

Chapter 5: Material Performance and Design Features

Fabric Additional Features:

IEC 61482-1-2 Class 1

IEC 61482-1-1 ATPV: 7.3 cal/cm²

Protective Clothing against Electric Arc Thermal Risk

Water and Oil Repellent

Fabric Information:

Flame Retardant & Antistatic - 200 g/m²

• **87% Cotton**

• **12% Nylon**

• **1% Antistatic**

Accessories:

- Flame retardant and antistatic fabric
- 100% Meta-aramid 3-ply sewing threads
- Flame retardant reflective strips with 50 mm aramid back surface
- Flame retardant zipper
- Flame retardant velcro tapes

Jacket Technical Information:

- Zippered windscreen with velcro on the front
- Pockets with flaps on the right and left chest
- Side pockets with protective flaps
- Flame retarded reflective strips on front, back body and arms
- Elastic sleeve cuffs (adjustable with velcro fasteners)
- Pencil pocket on the left arm
- Pictogram printing on the right arm - according to the Finished Product Certificate

Trousers Technical Information:

- Front zipper
- Elastic at the back of the waist
- Side pockets with protective flaps
- Bellows cargo pockets with flaps on the sides of the legs
- Pictogram Print on the right pocket flap - according to the Finished Product Certificate

• Flame retardant reflective strips at knee level

• Double pockets with flaps on the back

Washing and Usage Suggestions:

- Protective Properties valid for 50 washes
- Maximum washing temperature should be 40 ° C
- Hand washable
- Industrial cleaning is possible
- Dry cleanable
- All velcro, zippers and pockets must be closed
- Clothes should be washed separately
- Bleaching material should not be used
- Reflective strip part should never be ironed

ISS1302

ISS1002



ISW1300

ISMONTPRO Jacket “Prime” Flame Resistant (Summer)

ISW1000

ISMONTPRO Trousers “Prime” Flame Resistant (Winter)

Ready Made Product CE Certification:

EN 11612 A1 A2 B1 C1 F1

Heat and Flame Protective Clothing

EN 1149-5

Electrostatic Properties

Chapter 5: Material Performance and Design Features

EN 11611 A1 and A2, Class 1

Protective Clothing Used in Welding and Related Processes

Fabric Additional Features:

EN 11612 E2

IEC 61482-1-2 Class 1

IEC 61482-1-1 ATPV: 9.2 cal/cm2

Protective Clothing against Electric Arc Thermal Risk

Water and Oil Repellent

Fabric Information:

Non-Flammable & Antistatic - 340 g/m²

- **99% Cotton**
- **1% Antistatic**

Accessories:

- Flame retardant and antistatic fabric
- 100% Meta-aramid 3-ply sewing threads
- Flame retardant reflective strips with 50 mm aramid back surface
- Flame retardant zipper
- Flame retardant velcro tapes

Jacket Technical Information:

- Front windshield with velcro zip fastening
- Pockets with flaps on the right and left chest
- Velcro side pockets
- Flame retardant reflective strips on front, back body and arms
- Elastic cuffs (adjustable with velcro)
- Pictogram print on right sleeve - according to Finished Product Certificate
- Elbows are double reinforced

Trousers Technical Information:

- Front zipper
- Elastic at the back of the waist
- Side pockets with protective flaps
- Bellows cargo pockets with flaps on the sides of the legs
- Flame retardant reflective strips at knee level
- Double pockets with flaps on the back
- Pictogram printing on the right pocket flap (applied according to the finished product certificate)

Washing and Usage Suggestions:

- Protective properties are valid for 50 washes
- Maximum washing temperature should be 40 °C
- Hand washable
- Industrial cleaning is possible
- Dry cleanable
- All velcro, zippers and pockets must be closed.
- Clothes should be washed separately
- Bleaching material should not be used.
- Reflective strip part should never be ironed.



ISW4500

ISMONTPRO Coat "Prime" Flame Resistant

Ready Made Product CE Certification:

EN 11612 A1 A2 B1 C1 F1

Heat and Flame Protective Clothing

EN 1149-5

Electrostatic Properties

Chapter 5: Material Performance and Design Features

EN 11611 A1 and A2, Class 1

Protective Clothing Used in Welding and Related Processes

Fabric Additional Features:

EN 11612 E3

IEC 61482-1-2 Class 1

IEC 61482-1-1 ATPV: 9.2 cal/cm2

Protective Clothing against Electric Arc Thermal Risk

Fabric Information:

Flame Retardant & Antistatic - 340 g/m²

- **99% Cotton**
- **1% Antistatic**

Accessories:

- Flame retardant and antistatic fabric
- 100% Meta-aramid 3-ply sewing threads
- Flame retardant reflective strips with 50 mm aramid back surface
- Flame retardant zipper
- Flame retardant velcro tapes

Technical information:

- Zipped windscreen with velcro on the front
- Top pockets with flaps on the right and left chest
- Front flap pockets
- Flame retarded reflective strips on front and back body and arms
- Arm cuffs are ribbed hidden inside; cuffs can be adjusted with velcro fasteners.
- Pictogram printing on the right arm - according to the Finished Product Certificate
- Hoodie

Washing and Usage Suggestions:

- Protective properties are valid for 50 washes
- Maximum washing temperature should be 40 °C
- Hand washable
- Industrial cleaning is possible
- Dry cleanable
- All velcro, zippers and pockets must be closed
- Clothes should be washed separately
- Bleaching material should not be used
- Reflective strip part should never be ironed





ISW0400

ISMONTPRO Coverall “Prime” Flame Resistant (Winter)

Ready Made Product CE Certification:

EN 11612 A1 A2 B1 C1 F1

Heat and Flame Protective Clothing

EN 1149-5

Electrostatic Properties

Chapter 5: Material Performance and Design Features

EN 11611 A1 and A2, Class 1

Protective Clothing Used in Welding and Related Processes

Fabric Additional Features:

EN 11612 E3

IEC 61482-1-2 Class 1

IEC 61482-1-1 ATPV: 9.2 cal/cm²

Protective Clothing against Electric Arc Thermal Risk

Fabric Information:

Flame Retardant & Antistatic - 340 g/m²

- **99% Cotton**
- **1% Antistatic**

Accessories:

- Flame retardant and antistatic fabric
- 100% Meta-aramid 3-ply sewing threads
- Flame retardant reflective strips with 50 mm aramid back surface
- Flame retardant zipper
- Flame retardant velcro tapes

Technical information:

- Front zipper
- Side pockets with protective flaps
- Bellows cargo pocket with flap on left leg side
- Elastic at the back of the waist
- Double pockets with flaps on the back
- Flame retardant reflective strips on front, back body, legs and arms
- Pictogram print on right sleeve - according to Finished Product Certificate
- Elastic cuffs (adjustable with Velcro)

Washing and Usage Suggestions:

- Protective properties are valid for 50 washes
- Maximum washing temperature should be 40 °C
- Hand washable
- Industrial cleaning is possible
- Dry cleanable
- All Velcro, zippers and pockets must be closed
- Clothes should be washed separately
- Bleaching material should not be used
- Reflective strip part should never be ironed



ISW0007

ISMONTPRO Welder Jacket

ISW0010

ISMONTPRO Welder Trousers

Ready Made Product CE Certification:

EN 11612 A B1 C1 D3 E3 F1

Heat and Flame Protective Clothing

EN 1149-5

Electrostatic Properties

Chapter 5: Material Performance and Design Features

EN 11611 A1 and A2, Class 2

Protective Clothing Used in Welding and Related Processes

IEC 61482 Class 1

Protective Clothing against Electric Arc Thermal Risk

Fabric Additional Features:

IEC 61482-1-1 ATPV: 12.4 cal/cm²

EN 9185

Evaluation of the resistance of materials to molten metal splash: Cryolite>100 g

Fabric Information:

Flame Retardant & Antistatic - 330 g/m²

- **54% Viscose FR**
- **20% Wool**
- **20% Polyamide**
- **5% Aramid**
- **1% Antistatic**

Accessories:

- Flame retardant and antistatic fabric
- 100% Meta-aramid 3-ply sewing threads
- Flame retardant zipper
- Flame retardant velcro tapes
- Flame retardant plastic snaps

Jacket Technical Information:

- Zippered windscreen on the front
- Top pockets with flaps on the right and left chest
- Arm cuffs can be adjusted with FR plastic snaps
- Pictogram printing on the right arm - according to the Finished Product Certificate

Trousers Technical Information:

- Front zipper
- Elastic waist
- Internal flap side pockets

Washing and Usage Suggestions:

- Maximum washing temperature should be 40 ° C
- Hand washable
- Industrial cleaning is possible
- Dry cleanable
- All Velcro, zippers and pockets must be closed
- Clothes should be washed separately
- Bleaching material should not be used



ISW2802

ISMONTPRO FLAME-RETARDANT RAINCOAT

Fabric Additional Properties:

EN 14116

Protective Clothing against Heat and Flame

EN 1149-5

Electrostatic Properties

EN 20471

High Visibility Clothing - Test Methods and Requirements

EN 13034

Protective Clothing against Liquid Chemical Substances

EN 343

Protective Clothing - Protection against Rain, Class 3 -2

Fabric Information:

FR-OXFORD, 250 g/m²

Flame Retardant & Antistatic Featured

98% Polyester

2% Antistatic

Accessories:

- Flame-retardant, antistatic, water-repellent, and breathable fabric
- 100% Meta-aramid 3-ply stitch threads
- Flame-retardant zipper
- Flame-retardant hook and loop tapes
- 50 mm aramid-backed flame-retardant reflective tapes

Technical Information:

- Zippered front closure with hook and loop wind guard
- Protective flap-covered front pockets
- Flame retardant reflective tapes on body and sleeves
- Pictogram print on right arm (according to the finished product certificate)

Washing and Usage Suggestions:

- Protective properties are valid for 50 washes
- Maximum washing temperature should be 40 °C
- Hand washable
- Industrial cleaning is possible
- Dry cleanable
- All Velcro, zippers and pockets must be closed
- Clothes should be washed separately
- Bleaching material should not be used
- Reflective strip part should never be ironed



ISW8401

Flame Resistant Collar

***Additional protection for
flame-retardant work clothing***

Fabric Additional Features:

EN 11612 A1 A2 B1 C1

Heat and Flame Protective Clothing

EN 1149-5

Electrostatic Properties

Chapter 5: Material Performance and Design Features

Fabric Information:

RIZAL24 - 240 g/m²

Flame Retardant & Antistatic

- **93% Meta-aramid**
- **5% Para-aramid**
- **2% Antistatic**

Accessories:

- Flame retardant and anti-static fabric
- 100% Meta-aramid 3-ply sewing threads

Washing and Usage Suggestions:

- Maximum washing temperature should be 40 °C
- Hand washable
- Industrial cleaning is possible
- Dry cleanable
- Clothes should be washed separately
- Bleaching material should not be used
- Reflective strip part should never be ironed



ISW8301

Flame Resistant Balaclava



Flame resistance performance can continue for its normal duration when washing and maintenance instructions are followed.

WASHING FR PRODUCTS

All FR products must be washed and dried regularly to be free of dirt and contamination. The quality of the washing service is vital importance. Clothes should be washed according to the washing instructions sewn on them. If the clothes are washed according to the given rules, their flame resistance will last longer.

Washing / Drying Instructions

Preliminary procedures: If it is very difficult to remove the stain, it can be poured over the stain with commercially available liquid soaps and rubbed gently before proceeding with the washing process. Professional stain removers on the market for hard and stubborn stains can be applied for a certain period of time. Washing bleaches and washing detergents containing hydrogen peroxide should never be used. Otherwise, the flame resistance performance of the products will decrease. Other cleaning extras, such as fabric softeners, will also reduce its flame resistance property and performance.

Washing

Always wash contaminated work clothes separately from other clothes. Work clothes made of flame-resistant fabric can be washed at high temperatures. It is always recommended to do washing in accordance with the washing instructions on the garment. For the continuation of flame resistance performance, be sure to flip over and close the zippers when washing your clothes.

The Amount of Washing

For a more effective washing performance, make sure that you do not put a large amount of clothes in the machine.

Drying

Drum drying is not recommended for such clothes. The high temperature used in this method can lead to the shrinkage of clothes. It is also not recommended to do drying by hanging directly in the sunlight.



Fabric Information

The fabrics used in the ESD series are strong and durable. Carbon fibre woven from fabric provides excellent antistatic protection.

Benefits of Clothing

The formation of electrostatic discharge (ESD) can damage sensitive electronic components or create a fire risk when working with solvents and other flammable materials. These clothes are perfect for use in electrostatically protected areas. Conductive fibres in clothing work by preventing the formation of static charges, allowing them to disperse through conductive fibres and get into the soil.



EN 1149

EN 1149-5

This European standard is part of a set of standards for testing methods and requirements for the electrostatic properties of protective clothing. The standard specifies the material and design requirements for clothing used as part of a total grounded system for preventing incendiary discharges. In flammable environments enriched with oxygen, the requirements may not be sufficient. This standard does not apply to protection against mains voltages.



EN 61340-5-1 : 2002

Protection of Electronic Devices
Electrostatic Events



WHAT IS ESD?

Have you ever felt a small stream of energy pass through your hand when you touch someone else? This is what we call ESD, that is, electrostatic discharge, which is caused by the release of static energy accumulated in our bodies while moving through space.

That tiny stream of energy you feel when an ESD occurs is actually 3,500 volts of static energy released. We feel nothing less than that. However, the electronics around us are very sensitive and can be affected by static as little as 5 or 10 volts.

ESD protective clothing prevents sensitive electronic parts and circuits in the working environment from being damaged by static electricity caused by body movements. It is protective, lightweight and comfortable to use.

ISM 6641

ESD Crew Neck T-Shirt

- Crew neck
- Short sleeve

Certificate: ESD / IEC 61340-5-1, EN 1149-5: 2018
Fabric: 90% Cotton 8% Polyester 2% Antistatic - 150 g/m²
Colour: Grey, Royal Blue
Sizes: S-XXL



ISM 6640

ESD Polo Neck T-Shirt

- Polo neck
- 2-Button placket on the front
- Short sleeve

Certificate: ESD / IEC 61340-5-1, EN 1149-5: 2018
Fabric: 90% Cotton 8% Polyester 2% Antistatic - 210 g/m²
Colour: Grey, Royal Blue
Sizes: S-XXL



150 g



ISM 6638

ISM 6638

ESD Crew Neck Long Sleeve T-Shirt

- Crew neck
- Long Sleeve

Certificate: ESD / IEC 61340-5-1, EN 1149-5: 2018

Fabric: 90% Cotton 8% Polyester 2% Antistatic - 150 g/m²

Colour: Grey, Royal Blue

Sizes: S-XXL



ISM 6639

ESD Polo Neck Long Sleeve T-Shirt

- Polo neck
- 2-Button placket on the front
- Long sleeve

Certificate: ESD / IEC 61340-5-1, EN 1149-5: 2018

Fabric: 90% Cotton 8% Polyester 2% Antistatic - 210 g/m²

Colour: Royal Blue

Sizes: S-XXL



210 g



ISM 6639



ISM 0060

Sonderproduktion

ISM 0060

ESD Full Zip Sweashirt

- Polo neck
- 2-Button placket on the front
- Long sleeve, cuffed arm mouths

Certificate: ESD / IEC 61340-5-1, EN 1149-5: 2018

Fabric: 90% Cotton 8% Polyester 2% Antistatic - 290 g/m²

Colour: Grey, Royal Blue

Sizes: S-XXL



EN 1149

ISM 6631

ESD Polo Neck Sweatshirt

- Polo neck
- 2-Button placket on the front
- Long sleeve, cuffed arm mouths

Certificate:

ESD / IEC 61340-5-1, EN 1149-5: 2018

Fabric: 90% Cotton 8% Polyester 2% Antistatic - 290 g/m²

Colour: Grey, Royal



EN 1149



ISM 6631

245 g



ISM 1040

ESD Trousers

- Front zipper
- Elastic at the back of the waist
- Pockets on sides, single flap pocket on the back
- Cargo pocket on the right side

Certificate: ESD / IEC 61340-5-1, EN 1149-5:2018

Fabric: 64% Polyester 35% Cotton 1% Antistatic

Colour: Navy

Sizes: 44-62



EN 1149 Overalls and aprons with antistatic properties are used in many areas such as paint shops, the automotive sector and furniture production.



01 M016-07

Antistatic Work Apron

- Zipper closure system
- Mandarin collar (35 mm)
- Long sleeves, ribbed cuffs (50 mm)

Certificate: ESD / IEC 61340-5-1, EN 1149-5:2018

Fabric: 99% Polyester 1% Antistatic



01 M004-10

Antistatic Overalls

- Zipper closure system
- Mandarin collar (35 mm)
- Long sleeves, ribbed cuffs (50 mm)

Certificate:

ESD / IEC 61340-5-1

EN 1149-5:2018

Fabric:

99% Polyester 1% Antistatic





ISM 0400

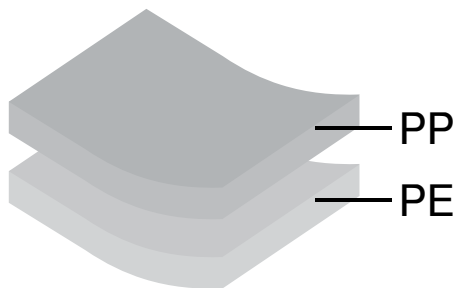
Disposable Medical Coverall

- Zipper closure system
- Hooded
- Elastic around the hood, armholes, waist and hems
- "ISM SAFE" logo sticker on left chest

Fabric: 100% Polypropylene, (PP)
Polyethylene (PE) Laminated 55 g/m²
100% Polypropylene - 40 g/m²

Colour: White

Sizes: S - XXL



***Breathable protection
against hazardous
solid particles...***



ISM 1690

Disposable Medical Gown

- Crew neck
- It is closed with Velcro tape on the back of the collar and fastened with a piping
- Belted at the waist
- Ribbed cuffs

Fabric: NON-WOVEN (SS)
100% Polypropylene - 40 g/m²

Colour: Blue

Sizes: L, XXL

WORK JACKET

195 g



01 M013-06

01 M013-06

Seasonal Jacket

- Thin field jacket
- Chest and back yoke edges with reflective piping
- Zipper closure system (bone teeth)
- The wind flap on the zipper is closed with hidden snap fasteners at the top and bottom.
- Internal flap pockets on the right and left chest
- Collar, chest pocket flaps, underarms, sides and cuffs with garni accessories
- Sleeve cuffs with snap fastener
- Internal side pockets with fillets
- Pen pocket on left sleeve
- Snaps on both sides at the back of the waist + loop (can be narrowed)

Fabric: 65% Polyester 35% Cotton - 195 g/m²

Colour: Grey/Navy

Sizes: S-XXL

The reflective winter jacket is in a comfortable form and in a style that you can easily wear over your work clothes. It is suitable for use in dry and cold working environments with its 100% Cotton thick gabardine outer surface and padded quilted inner structure.



01 M013-08

Work Jacket with Reflective Tapes

- Zipper closure
- Velcro flap pockets on chest
- Large top pockets on the sides
- Velcro cuffs
- Semi-elastic waist
- Reflective tapes on the shoulders and arms (5 cm)

Fabric:

Outer Surface: 100% Cotton - 390 g/m²

Inner Filling: Fibre - 150 g/m²

Inner Lining: 100% Polyester

Colour: Navy, Grey

Sizes: S-XXL

01 M013-08

A great choice for seasonal transitions with its comfortable fit and stylish design!

275 g

01 M013-11

Relax Jacket

- Velcro windscreen with zipper closure system
- Pockets with flaps on the right and left chest
- Velcro side pockets
- Reflective strips on front and back body and arms
- Elastic sleeve cuffs (adjustable with Velcro fasteners)
- Elbows are double reinforced

Fabric: 100% Cotton - 275 g/m²

Colour: Grey/Navy

Sizes: S-XXL





ISM 1009

Pro Stretch Work Trousers

It provides freedom of movement you need in difficult conditions with its comfortable and flexible structure.

- Front zippered
- Elastic waist structure
- Inner pockets
- Cargo pockets with flaps
- Double flap pockets on the back
- Knee pad pockets
- Reflective details on knees and flap pockets
- Wide and reinforced belt loops

Fabric: 62% Cotton, 35% Polyester, 3% Lycra - 260 gr

Colour: Navy/Black, Grey/Black

Size: 44-62

Stretch



WORKWEAR



NEW

B
MAPA 579
KRYTECH
11/2019

ISM 1004

ROBUST Work Trousers

- Front zipper
- Side pockets
- Double pocket on the back
- Side tool pockets and cargo pocket
- Knee pad slots

Fabric: 97% Cotton 3% Lycra - 360 g/m²

Colour: Anthracite

Sizes: 38-60



360 g



Durable CORDURA® details resistant to abrasion and tearing!



*High performance with exceptional comfort!
Sporty work trousers with contrast detailing.*



245 g

ISM 1001

SX Work Trousers Two-Tone

Fabric: 65% Polyester
35% Cotton - 245 g/m²

Colour: Anthracite/Orange,
Anthracite/Royal Blue

Sizes: 44-62



COMBINE YOUR WORK TROUSERS WITH OTHER MATCHING ITEMS!

West Vest



ISM 4302

Contrast Polo T-Shirt



ISM 6622



ISM 6800

Sweatshirt CONTRAST



ISM 1001

SX Work Trousers
Two-Tone





275 g

01 M010-15

Cargo Trousers

- Front zipper
- Elastic back waist
- Top pockets on the front right and left
- Commando pocket on the right
- Tool pocket on the left
- Single pocket on the back

Fabric: 100% Cotton - 275 g/m²

Colour: Grey, Royal Blue, Navy

Sizes: 44-62



01 M010-22

Cargo Trousers with Reflective Tapes - Winter

100% Cotton

390 g



01 M010-13

Cargo Pocket Trousers

65% Polyester,
35% Cotton

245 g



01 M010-14

Work Trousers with Cargo Pockets

65% Polyester,
35% Cotton

245 g



01 M009-05

Cargo Pocket Trousers

Canvas 100%
Cotton

230 g



01 M010-06

Denim Work Trousers

Jean 100%
Cotton

380 g



01 M010-17

Cargo Trousers Canvas

60% Cotton 40% Polyester

245 g



Here is a comfortable, breathable, and durable work overall that allows you to work with ease. Experience the natural texture of cotton!

Overall, Baumwolle



275 g



01 M003-02

Gardener Overalls

- Front middle zippered pocket
- Trousers side pockets at the top
- Waist form can be adjusted from the sides (buttoned)
- Elastic back of the straps for comfortable movement

Fabric: 100% Cotton - 275 g/m²

Colour: Grey, Navy, Royal Blue, Red, Orange

Sizes: XS-3XL

Gardener overalls made of 100% cotton fabric are designed with comfort and durability.



ISM 4000

Cotton Overalls

- Front zipper system
- Zipped top pockets on chest
- Pencil pocket on the left arm
- Side pockets on the sides
- Tool pocket on the right
- Elastic at the back of the waist
- Double pocket on the back
- 50 mm reflective tapes on shoulders, arms and legs

Fabric: 100% Cotton - 275 g/m²

Colour: Navy

Sizes: 46-60

245 g

*Practical designs that make
your work life easier.*

West Vest



SX Work Trousers
Two-Tone





01 M025-04

ISM 4302

ISM 6622

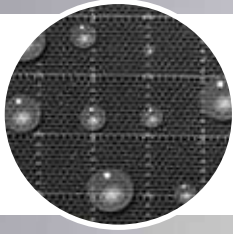
ISM 4302

West Vest

There are a total of 10 pockets on the west vest with a zipper on the front. Ideal for your equipment and important belongings that you can't take with you while working.

Fabric: 65% Polyester 35% Cotton - 245 g/m²
Colour: Anthracite/Orange, Anthracite/Royal Blue
Sizes: XS-3XL

ISM 1001



RIPSTOP fabric; tear-resistant, non-stretch, and lightweight. Square-shaped grid cells prevent holes from expanding in case of punctures. It's resistant to wind and rain, while maintaining a breathable structure.

ISM 4301

Promo Ribs Double Sided Vest

- Fleece inner surface provides extra warmth and comfort
- Adjustable hemline (rubber cord + stopper)
- Convenient pockets on chest and sides

Fabric

Outer Surface: 100% Polyester - 130 g/m²

Inner Surface Fleece: 100% Polyester - 220 g/m²

Colour: Navy, Grey

Sizes: XS-3XL





ISM 4314

ISM 4314

ISM Combo Vest

- Hooded
- Zipped pockets on sides

Fabric

Sides and Collar: 65% Polyester 35% Cotton - 300 g/m²

Body: 100% Polyester - 120 g/m²

Colour: Black

Sizes: XS-3XL

ISM 3800

ISM Combo Jacket

- Hooded
- Front zipper
- Chin guard on collar
- Zipped pockets on the sides
- Elastic cuffs and hem

Fabric

Arms and Hood: 65% Polyester 35% Cotton - 300 g/m²

Body: 100% Polyester - 120 g/m²

Colour: Black

Sizes: XS-3XL



ISM 3800



ISM 4312

Oxford Mix Vest

- Front zipper
- Side pockets at the top
- Pocket on left chest

Fabric: 100% Polyester - 60 g/m²

Filling: 300 g/m²

Colour: Navy (inner lining is red)

Sizes: S-XXL





ISM 4310

ISM 4310

Class Softshell Reflective Vest

- Front zipper
- Chin guard on collar
- Pockets on the sides
- Zipped pocket on right chest

Fabric: 96% Polyester 4% Lycra - 300 g/m²

Colour: Navy

Sizes: XS-3XL

ISM 4311

Westmont Ripstop Reflective Vest

- A placket under the front zipper provides extra wind protection.
- Inside zippered pockets on the sides and a vertical pocket on the right chest.

Fabric: Ripstop Fabric, 100% Polyester - 200 g/m²

Inner Surface Fleece: 100% Polyester - 220 g/m²

Colour: Navy

Sizes: XS-3XL



ISM 4311

Durability and high comfort combined in the functional jacket.



195 g

01 M043-03

Functional Vest

- Fleece lined
- Windscreen with snap closure on the zipper in front
- Concealed elastic protector on armholes
- Pocket with flap on left chest
- Mobile and pen pocket on right chest
- Front flap pockets
- The back hem is oval in shape.
- Adjustable hemline (rubber cord + stopper)

Fabric: Outer Surface: 65% Polyester 35% Cotton - 195 g/m²

Inner Surface: Fleece 100% Polyester - 220 g/m²

Colour: Navy, Grey

Sizes: S-XXL





195 g

ISM 4345

Ege Vest

- 50 mm reflective tape on the front-back body and shoulders
- Windscreen with snap closure on the zipper in front
- PVC nameplate slot on the right chest pocket
- Mobile pocket, pen pocket and D buckle on left chest
- Concealed elastic protector on armholes

Fabric:

Outer Surface: 65% Polyester 35% Cotton

Inner Lining: 100% Polyester

Inner Filling: Fibre -150 g/m²

Colour: Navy

Sizes: S-XXL





200 g

ISM 4510

Atlas Jacket

- Wear outer surface
- Filled lining for superior insulation
- Taped seams providing extra water support
- Windscreen with snap fastener on the front
- Internal pocket on right chest, mobile pocket on left chest
- ID brit on chest and D buckle
- Pockets on the sides
- Reflective tapes that increase visibility

Fabric: 100% Polyester, 300D Oxford Fabric - 200 g/m²

Certificate: EN 343 Class 3:1

Colour: Navy

Sizes: S-3XL



EN 343



This standard classifies the properties of materials and seams of protective clothing designed for protection against rain, mist, and ground moisture in order to ensure an adequate level of performance. The focus is on waterproofness and water vapor resistance (breathability)



ISM 4511

Atlas Coat

- Wear outer surface
- Filled lining for superior insulation
- Taped seams providing extra water support
- Front zipper snap closure
- Pockets on the right and left chest
- Front right and left flap pockets

Fabric: 100% Polyester,
300D Oxford Fabric - 200 g/m²
Certificate: EN 343 Class 3:1
Colour: Navy
Sizes: XS-3XL



EN 343

SOFTSHELL



01 M038-06

Softshell Outdoor Jacket

- Front zipper
- Chin guard on collar
- Zipped pockets on the sides and chest
- Collapsible hem (rubber cord + stopper)

Fabric: 96% Polyester 4% Lycra - 300 g/m²

Colour: Navy, Red, Grey, Black

Sizes: XS-3XL





300 g



01 M043-06

Softshell Outdoor Vest

- Front zipper
- Chin guard on collar
- Zipped pockets on the sides and chest
- Adjustable hemline (rubber cord + stopper)

Fabric: 96% Polyester 4% Lycra - 300 g/m²

Colour: Navy, Grey, Black

Sizes: S-3XL

FLEECE JACKET

The 2-layer laminated fleece jacket keeps you comfortably warm!





ISM 3814

Active Fleece Jacket

- Solid appearance with its thick structure
- Silver bone teeth practical zippers
- Zipped pockets on the sides and chest
- Elastic cuffs

Fabric: Fleece, 100% Polyester

Colour: Navy, Red

Sizes: XS-3XL



ISM 3814

ISM 6810

Trend Fleece Sweatshirt

- Soft and warm
- High zip collar

Fabric: 100% Polyester -220 gr

Colour: Antrasite, Black

Size: XS-3XL

ISM 6810

300 g

Whether outdoors, during sports, or in everyday life, choosing fleece products offers numerous benefits in terms of warmth and comfort. Products made from fleece fabric keep the body warm in cold weather. Additionally, the breathability of fleece fabric allows sweat to evaporate quickly, keeping the skin dry. This creates a sense of comfort and freshness even during sweating. Fleece products are generally lightweight and provide great freedom of movement. For these reasons, they are ideal options for outdoor activities, sports, or daily use. Furthermore, fleece fabric typically has a soft and pleasant texture, providing a comfortable wearing experience.



01 M038-03

Fleece Jacket

- Front zipper (Bone teeth)
- Side zipper pockets
- Collapsible Hemline (cord + stopper)

Fabric: Fleece 100% Polyester - 300 g/m²

Colour: Navy, Red, Grey, Black

Sizes: XS-3XL





ISM 0036



ISM 0036

Fleece Jacket Two Tone

The magnificent comfort of the fleece is now animated with contrast details; it is very useful with its practical zippers.

- Contrast coloured fleece jacket with accessories
- Front zipper
- Internal zipper pockets on the sides and right chest

Fabric: 100% Polyester - 300 g/m²

Colour: Grey/Black, Grey/Orange, Black/Orange

Sizes: XS-3XL



01 M043-02

01 M043-02

Fleece Vest

- Front zipper
- Side pockets

Fabric: Fleece 100% Polyester - 300 g/m²

Colour: Navy, Grey, Black

Sizes: XS-3XL

290 g

Stylish clothing when time is limited!

ISM 3815

RLX Fleece Jacket

While its mercerized outer surface provides a stylish appearance, its fleece inner surface is warm and comfortable.

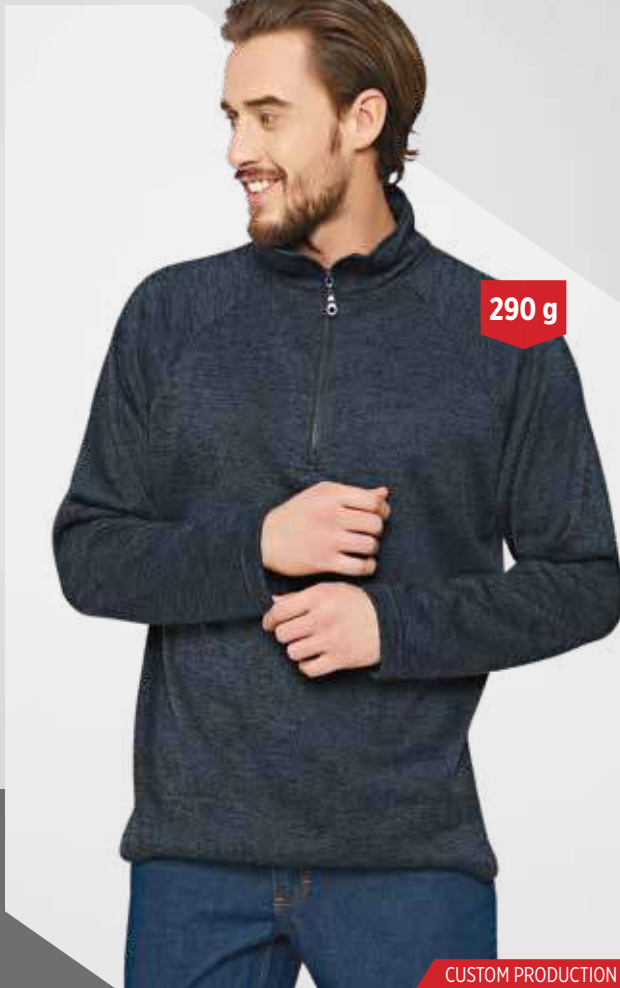
- Front zipper
- Zipped pockets on chest and sides
- Accessory on shoulders and collar

Fabric: Fleece, 100% Polyester

Colour: Grey, Navy

Sizes: XS-3XL





ISM 6690

CUSTOM PRODUCTION

ISM 6690

RLX Fleece Sweatshirt

- Mandarin collar with zipper
- Raglan sleeve

Fabric: Fleece, 100% Polyester

Colour: Grey, Navy

Sizes: XS-3XL

ISM 6691

Piping Detail Sports Jacket

- High Collar
- Stitching details on the front
- Front zipper
- Inside pockets on the sides

Fabric: 65% Cotton, 35% Polyester - 300 g/m²

Colour: Navy/Grey

Sizes: XS-3XL



ISM 6691

CUSTOM PRODUCTION



01 M066-03

Crew Neck Men's T-Shirt

- Crew neck
- Short sleeve

Fabric: 100% Cotton - 160 g/m²

Colour: White, Black, Yellow, Orange, Red, Grey, Navy, Green, Light Blue, Anthracite, Turquoise, Royal Blue

Sizes: XS-3XL



T-SHIRT



150 g

01 M066-04

Crew Neck Grey Melange Men's T-Shirt

- Crew neck
- Short sleeve

Fabric: 50% Cotton, 50% Polyester - 150 g/m²

Colour: Grey Melange

Sizes: XS-3XL



160 g

Herren T-Shirt

- | | | | |
|-------------------------------------------------------------------------------------|-----------|-------------------------------------------------------------------------------------|------------|
|  | Yellow |  | Royal Blue |
|  | Orange |  | Navy |
|  | Red |  | Grey |
|  | Blue |  | Anthracite |
|  | Turquoise |  | Black |
|  | Green |  | White |



ISM 0043

PRO T-Shirt

- Crew neck
- Contrast details

Fabric: 100% Polyester

Sizes: XS-XXL





01 M066-06

V Neck Men's T-Shirt

- V neck
- Short sleeve

Fabric: 100% Cotton - 160 g/m²

Colour: White, Grey, Red, Navy, Light Blue, Royal Blue, Black, Orange

Sizes: XS-3XL



01 M066-40

V Neck Men's T-Shirt (Grey Melange)

- V neck
- Short sleeve

Fabric: 50% Cotton 50% Polyester - 150 g/m²

Sizes: XS-3XL



POLO-SHIRT

Compelling comfort! Take a look at our 100% cotton and blended fabric shirts.



01 M066-10

Polo Neck Men's T-Shirt

- Polo neck
- Short sleeve
- 2-button front placket

Fabric: 100% Cotton - 220 g/m²

Colour: White, Yellow, Orange, Red, Light Blue, Green, Turquoise, Navy, Grey, Black, Anthracite, Claret Red, Royal Blue

Sizes: XS-3XL

01 M066-10

01 M066-17

Polo Neck Men's T-Shirt Grey Melange

- Polo neck
- Short sleeve
- 2-Button front placket

Fabric: 50% Cotton 50% Polyester - 195 g/m²

Sizes: S-XXL



01 M066-17





01 M066-31

01 M066-31

Polo Neck Women's T-Shirts

- Body-fitting form
- Polo neck
- Short sleeve
- Long placket with 5 buttons on the front

Fabric: 100% Cotton - 220 g/m²

Colour: White, Black, Turquoise, Royal Blue, Red, Orange, Navy

Sizes: XS-XXL

01 M066-30

Crew Neck Women's T-Shirt

- Body-fitting form
- Crew neck

Fabric: 100% Cotton - 160 g/m²

Colour: White, Orange, Red, Navy, Turquoise, Royal Blue

Sizes: XS-XXL



01 M066-30



ISM 6610

Crew Neck T-Shirt with Reflective

- Crew neck
- Short sleeve
- Single row of 50 mm reflective tape on the front and back

Fabric: 100% Cotton - 150 g/m²

Colour: Navy

Sizes: XS-3XL



ISM 6620

Polo Neck T-Shirt Reflective

- Polo neck
- Short sleeve
- 2-Button front placket
- Single row of 50 mm reflective tape on the front and back

Fabric: 100% Cotton - 220 g/m²

Colour: Navy

Sizes: XS-3XL





160 g



01 M066-41

ACTIVE Crew Neck T-Shirt

- Crew neck
- Short sleeve
- Reflective print on the front and back

Fabric: 100% Cotton - 160 g/m²

Colour: Royal Blue

Sizes: XS-3XL



01 M066-42

ACTIVE Polo Neck T-Shirt

- Polo neck
- Short sleeve
- 2-Button front placket
- Reflective print on the front and back

Fabric: 100% Cotton - 220 g/m²

Colour: Royal Blue

Sizes: XS-3XL



220 g



ISM 6626

CUSTOM PRODUCTION

ISM 6626

Polo Neck T-Shirt with Pocket

- Polo neck
- Short sleeve, ribbed cuffs
- 3-Button front placket
- Pocket on left chest
- Slits on the sides

Fabric: 100% Cotton

Colour: Royal Blue

Sizes: XS-3XL

ISM 6687

T-Shirt with Waist and Shoulder Detailed

- Crew neck
- Garni coloured accessory on waist and shoulders

Fabric: 100% Cotton

Colour: Navy/Royal Blue

Sizes: XS-3XL



ISM 6687

CUSTOM PRODUCTION



ISM 6688

Polo Neck T-Shirt with Pocket

- Polo neck
- Collar, collar placket, shoulders and sides are made of garni colour
- Ribbed cuffs in garni colour
- Pocket on left chest
- 6 cm slits on the sides

Fabric: 100% Cotton
Colour: Royal Blue/Black
Sizes: XS-3XL



ISM 6689

CUSTOM PRODUCTION

ISM 6689

Crew Neck T-Shirt with Accessories

- Crew neck
- Accessories on shoulders and sides are made of garni colour

Fabric: 100% Cotton
Colour: Royal Blue/Black
Sizes: XS-3XL

ISM 6688

CUSTOM PRODUCTION



01 M066-27

01 M066-27

Polo Neck T-Shirt 2 Tone

- Stylish two-colour design
- 2-button front placket
- White piping on chest and shoulders
- Ribbed cuffs

Fabric:

Grey Melange: 50% Polyester 50% Cotton - 195 g/m²

Red: 100% Cotton - 220 g/m²

Colour: Grey Melange, Red

Sizes: XS-3XL

Comfort and stylish design all in one!

ISM 6622

Contrast Polo T-Shirt

- Polo neck
- 2-button collar placket
- Short sleeves, ribbed cuffs

Fabric: Combed piqué 100% Cotton

Colour: Anthracite

Sizes: XS-3XL



ISM 6622



ISM 6628

Polo Neck T-Shirt with Placket Detail

- Polo neck
- Short Sleeve
- 3-Button front placket

Fabric: 100% Cotton - 220 g/m²

Colour: Anthracite

Sizes: XS-3XL



ISM 6628

CUSTOM PRODUCTION

ISM 6629

Grey Melange Polo Neck T-Shirt with Anthracite Detail

- Stylish design with anthracite details
- 3-Button front placket
- Reflective details on the shoulders
- Ribbed cuffs

Fabric:

Grey Melange: 50% Polyester 50% Cotton - 195 g/m²

Anthracite Details: 100% Polyester

Colour: Grey Melange

Sizes: XS-3XL



ISM 6629

CUSTOM PRODUCTION



145 g

NEW

DRY TOUCH® Fabrics,

- Have a soft texture
- Are flexible and comfortable
- Wrinkle-resistant
- Breathe well
- Dry quickly

DRY TOUCH® Technology

Thanks to its channelled fibers, DRY TOUCH® yarn facilitates moisture and air transfer, allowing air from outside to inside and moisture from inside to outside.

ISM 6625

SATURN DRYTOUCH Polo Neck Reflective T-Shirt

- Polo neck
- 50 mm reflective tape on the front and back

Fabric: 72% Drytouch 28% Polyester

Colour: Navy

Sizes: XS-3XL

Stay Fresh with Dry Touch Fabric:
Where Comfort Meets Confidence!



ISM 6624

CUSTOM PRODUCTION

ISM 6627

RECYCLED Polo Neck T-Shirt

- Polo neck
- Short Sleeve
- 3-button front placket

Fabric: 57% Cotton 43% Polyester

Colour: Navy

Sizes: XS-3XL



ISM 6627

CUSTOM PRODUCTION

ISM 6624

DRYTOUCH Polo Neck T-Shirt

- Polo neck
- Short Sleeve
- 3-Button front placket
- The collar and inside of the placket are made of garni colour

Fabric: 72% Drytouch,
28% Polyester - 145 g/m²

Colour: Navy

Sizes: XS-3XL





ISM 0044

ISM 0044

VIZON Polo Neck T-Shirt

- Detailed in garni colour on the front
- Polo neck
- Short Sleeve
- 3-Button front placket

Fabric: 100% Cotton - 220 g/m²

Colour: Royal Blue

Sizes: XS-XXL

ISM 0041

Polo Neck T-Shirt Gingham Detailed

- Polo neck
- Accessory made of gingham fabric on the inside of the collar, inside of the placket and on the cuffs
- Buttoned cuffs

Fabric:

Main Fabric: 100% Cotton - 220 g/m²

Accessories: Gingham Fabric, 100% Cotton

Colour: Navy, Red

Sizes: XS-3XL



ISM 0041

01 M066-11

Men's Long Sleeve Polo Neck T-Shirt

- Polo neck
- 2-Button front placket
- Long sleeves, ribbed cuffs

Fabric: 100% Cotton - 160 g/m²**Colour:** White, Red, Navy, Royal Blue**Sizes:** XS-3XL

01 M066-12

Men's Long Sleeve Polo Neck T-Shirt
Grey Melange

- Polo neck
- 2-Button front placket
- Long sleeves, ribbed cuffs

Fabric: 50% Cotton 50% Polyester - 195 g/m²**Colour:** Grey Melange**Sizes:** XS-3XL

LONG SLEEVE POLO-SHIRT





CUSTOM PRODUCTION

ISM 6686

ISM 6686

4-Colour Polo Neck T-Shirt

- Polo neck
- Ribbed cuffs
- 6 cm slits on the sides

Fabric: 100% Cotton

Colour: Royal Blue/Yellow/Grey

Sizes: XS-3XL

ISM 6643

4-Colour Crew Neck T-Shirt

- Crew neck
- Ribbed cuffs

Fabric: 100% Cotton

Colour: Royal Blue/ Yellow/Grey

Sizes: XS-3XL



CUSTOM PRODUCTION

ISM 6643



CUSTOM PRODUCTION

ISM 6633

ISM 6633

4-Colour Polo Neck Sweatshirt

- Polo neck
- 3-Button front placket
- Ribbed cuffs

Fabric: 100% Cotton

Colour: Royal Blue/Yellow/Grey

Sizes: XS-3XL

ISM 6634

4-Colour Sweatshirt

- Crew neck
- Ribbed cuffs and hem

Fabric: 100% Cotton

Colour: Royal Blue/Yellow/Grey

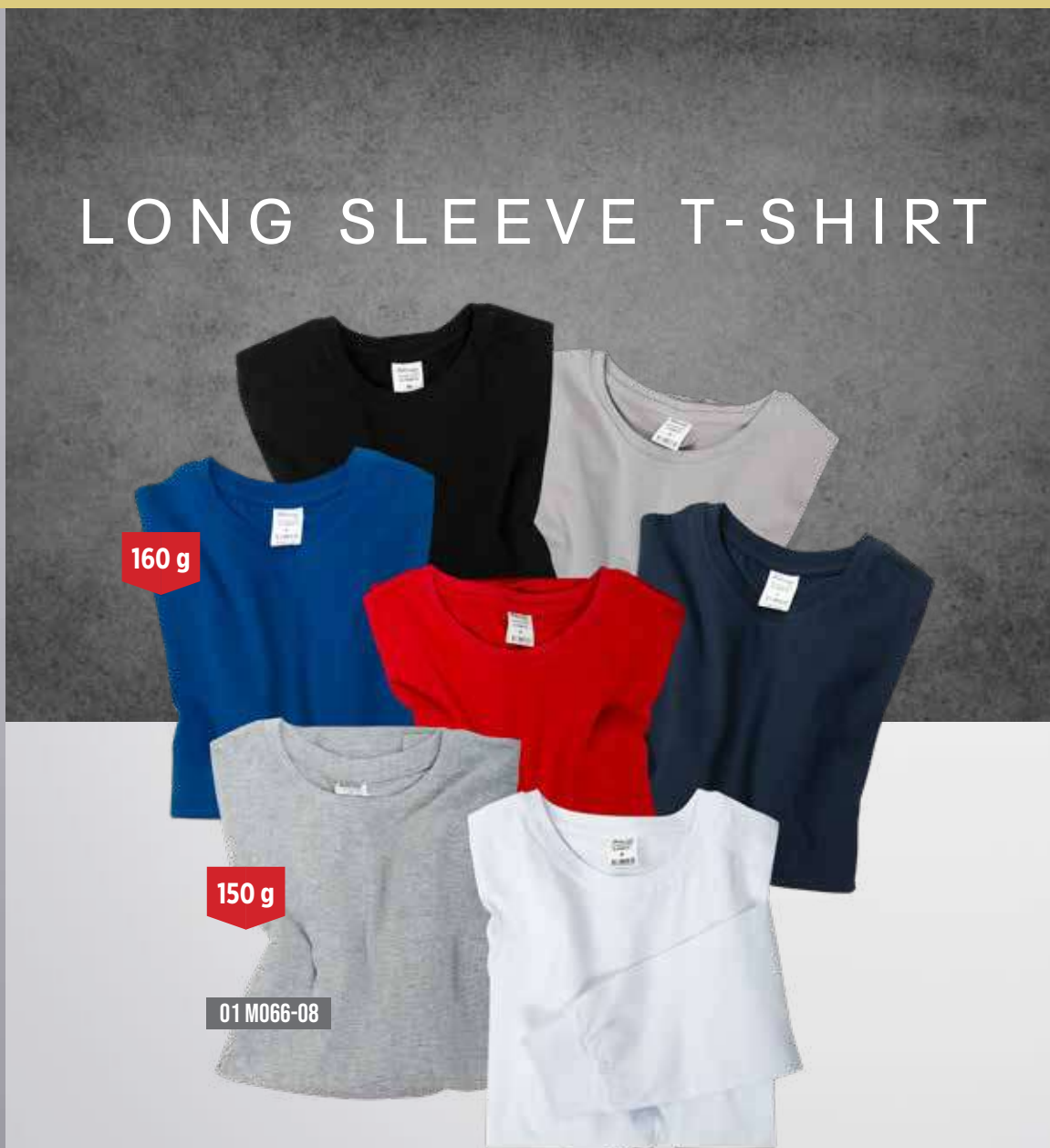
Sizes: XS-3XL



CUSTOM PRODUCTION

ISM 6634

LONG SLEEVE T-SHIRT



01 M066-07

Men's Long Sleeve T-Shirt

- Crew neck
- Long sleeves, ribbed cuffs

Fabric: 100% Cotton - 160 g/m²

Colour: White, Grey, Red, Navy, Royal Blue, Black

Sizes: XS-3XL

01 M066-08

Long Sleeve T-Shirt Grey Melange

- Crew neck
- Long sleeves, ribbed cuffs

Fabric: 50% Cotton 50% Polyester - 150 g/m²

Colour: Grey Melange

Sizes: XS-3XL

Our sweatshirt VENUS is both stylish and practical thanks to its elastic and comfortable fabric.



ISM 6635

Venus Sweatshirt

It is very stylish and useful with its thin, lycra and comfortable fabric.

- Crew neck

Fabric: 95% Cotton, 5% Lycra - 280 gr

Colour: Navy

Size: XS-3XL



SWEATSHIRT



290 g



290 g

01 M066-24

01 M066-24

Sweatshirt Antrasite Melange

- Crew neck
- Ribbed sleeves and hemline

Fabric: 50% Cotton, 50% Polyester - 290 g/m²

Colour: Antrasite

Size: XS-3XL

01 M066-22

Men's Sweatshirt Crew Neck

- Crew neck
- Rib at cuffs and hem

Fabric: 50% Cotton 50% Polyester - 290 g/m²

Colour: Grey Melange

Sizes: XS-3XL



01 M066-21

Men's Sweatshirt Crew Neck

- Crew neck
- Rib at cuffs and hem

Fabric: 100% Cotton - 290 g/m²

Colour: White, Grey, Red, Navy, Orange, Turquoise, Royal Blue, Black, Yellow

Sizes: XS-3XL

290 g



01 M066-21

290 g



ISM 6800

Contrast Polo Sweatshirt

- Polo collar (striped)
- Two button plackets
- Ribbed sleeve cuffs (striped)

Fabric: 100% Cotton - 290 gr

Colour: Navy, Grey

Size: XS-3XL

ISM 6800

290 g



01 M066-23

01 M066-23

Contrast Collar Sweatshirt

- Contrast coloured polo neck
- 2-Button front placket
- Rib at cuffs

Fabric: 100% Cotton - 290 g/m²

Colour: Red/Navy

Sizes: XS-3XL

01 M066-37

Two Colour Sweat Jacket

- Front zipper
- Zippered pockets on the chest and sides
- Ribbed cuffs and hem

Fabric: 100% Cotton - 290 g/m²

Colour: White/Grey

Sizes: XS-3XL

290 g



01 M066-37



290 g

01 M066-29

01 M066-29

Men's Polo Neck Sweatshirt Melange

- Polo neck
- 2-button front placket
- Ribbed cuffs and hem

Fabric: 50% Cotton 50% Polyester - 290 g/m²

Colour: Grey Melange, Blue Melange

Sizes: XS-3XL

01 M066-28

Polo Neck Sweatshirt

- Polo neck
- 2-button front placket
- Ribbed cuffs

Fabric: 100% Cotton - 290 g/m²

Colour: Royal Blue, Navy

Sizes: XS-3XL



290 g

01 M066-28

HOODIE

Wrap Yourself in Comfort:
Elevate Your Style with Our Hoodies!



290 g

01 M066-35



290 g

01 M066-33

01 M066-33

Hooded Sweatshirt

- Ribbed cuffs and hem
- Kangaroo pocket on the front

Fabric: 100% Cotton - 290 g/m²

Colour: Royal Blue, Navy

Sizes: XS-3XL

01 M066-35

Hooded Sweatshirt Grey Melange

- Ribbed cuffs and hem
- Kangaroo pocket on the front

Fabric: 50% Cotton 50% Polyester - 290 g/m²

Sizes: XS-3XL



290 g

01 M066-36

Sweatshirt Zipper Collar

- Zipper collar
- Ribbed cuffs and hem

Fabric: 50% Cotton %50 Polyester - 290 g/m²

Colour: Grey Melange

Sizes: XS-3XL



290 g

01 M066-38

01 M066-38

Zipper Sweatshirt

- Front zipper
- Zipper pockets on the sides
- Ribbed cuffs and hem

Fabric: 100% Cotton - 290 g/m²

Colour: Grey, Navy, Royal Blue, Black

Sizes: XS-3XL

01 M066-36

170 g



01 M016-20

Men's Lab Coat with Snaps

- Snap front closure
- Side pockets at the top
- Pocket on left chest
- Side slits for comfortable movement

Fabric: 65% Polyester 35% Viscose - 175 g/m²

Colour: White

Sizes: 46-60

01 M016-21

Women's Lab Coat with Snaps

- Snap front closure
- Side pockets at the top
- Pocket on right chest

Fabric: 65% Polyester 35% Viscose - 170 g/m²

Colour: White

Sizes: S-4XL



170 g

01 M016-22

Women's Classic Lab Coat

- Mandarin Collar
- Snap front closure
- Pocket on right chest
- Side pockets at the top

Fabric: 65% Polyester 35% Viscose - 175 g/m²

Colour: White

Sizes: S-4XL



01 M016-23

Men's Classic Lab Coat

- Mandarin collar
- Snap front closure
- Pocket on left chest
- Side pockets at the top

Fabric: 65% Polyester 35% Viscose - 175 g/m²

Colour: White

Sizes: 46-60



170 g

01 M016-06

Men's Lab Coat with Buttons

- Button front
- Side pockets at the top
- Pocket on left chest
- Side slits for comfortable movement

Fabric: 65% Polyester 35% Viscose - 175 g/m²

Colour: White, Grey, Navy, Royal Blue

Sizes: 44-60



01 M016-12

Women's Lab Coat with Buttons

- Button front
- Side pockets at the top
- Pocket on right chest

Fabric: 65% Polyester 35% Viscose - 170 g/m²

Colour: White, Blue, Pink

Sizes: S-4XL





ISM 5701

Unisex Scrub Top

- V-neck
- Left chest pocket
- Inner pockets on the sides

Fabric: 73% Polyester, 22% Viscose, 5% Lycra

Colour: Burgundy, Navy, Salmon

Size: XXS-3XL

ISM 5702

Unisex Scrub Trousers

- Elastic waistband
- Side pockets
- Upper pocket on the right leg

Fabric: 73% Polyester, 22% Viscose, 5% Lycra

Colour: Burgundy, Navy, Salmon

Size: XXS-3XL





01 M057-02

Men's Hospital Suit

- Shirt, V-Neck
- Shirt, short sleeve
- Shirt, Pocket on left chest
- Trousers with elastic waist
- Trousers, pockets on sides

Fabric: 65% Polyester 35% Cotton - 145 g/m²

Colour: White, Navy, Blue, Royal Blue, Green

Sizes: 40-60



ISM 0038

Men's Hospital Suit

- V-neck top is short sleeved
- Sides have slits for comfortable wear
- There are pockets on both sides and a pen pocket on the left chest
- The trousers have side pockets and elasticities at the back of the waist
- There is a single buttoned pocket on the back

Fabric: 65% Polyester 35% Cotton - 200 g/m²

Colour: Burgundy

Sizes: XS-3XL



01 M057-03

Women's Hospital Suit

Shirt:

- V neck
- Short sleeved
- Pocket on right chest

Trousers:

- Front zipper
- Pockets on the sides

Fabric: 65% Polyester 35% Viscose - 170 g/m²

Colour: Pink

Sizes: 36-52

ISM 0037

Women's Hospital Suit

Shirt:

- V neck
- Short sleeved
- Pocket on right chest
- Double pocket in front

Trousers:

- Elastic waist
- Pockets on the sides

Fabric: 65% Polyester 35% Cotton - 200 g/m²

Colour: Lilac

Sizes: XS-4XL





01 M034-02

Women's Hospital Jacket Short Sleeve

- Button front
- Body-fitting form
- Top pockets on the front right and left

Fabric: 65% Polyester 35% Viscose - 175 g/m²

Colour: White

Sizes: 36-52



01 M007-09

Women's Hospital Jacket Long Sleeve

- Button front
- Body-fitting form
- Top pockets on the front right and left

Fabric: 65% Polyester 35% Viscose - 170 g/m²

Colour: White

Sizes: S-4XL

01 M007-09K

Women's Work Jacket

- Button front
- Body-fitting form
- Top pockets on the front right and left

Fabric: 65% Polyester 35% Viscose - 170 g/m²

Colour: Pink, Blue

Sizes: S-3XL



01 M010-10

Women's Work Trousers

- Front zipper, with forceps
- Elastic back waist
- Pockets on the sides

Fabric: 65% Polyester 35% Viscose - 170 g/m²

Colour: White, Grey

Sizes: 36-54





ISM 0703

Colorish Women's Top Uniform

- The double-breasted collar is deep enough not to bother you when working.
- Short sleeved
- Front top pockets

Fabric: 75% Polyester 25% Viscose - 175g/m²

Colour: Patterned

Sizes: XS-3XL

ISM 0730

Women's Top Uniform

- V Neck
- Snap closure system
- ID pocket on right chest, name tag on left chest
- 5 pockets in total. Front and back
- Side slits for comfortable movement

Fabric:

Polyester Gabardine 65% Polyester 35% Cotton - 195 g/m²

Pique Details 65% Cotton 35% Polyester - 210 g/m²

Colour: Turquoise **Sizes:** XS-3XL



CUSTOM PRODUCTION

ISM 0701

Wave Women's Top Uniform

- V Neck
- Front top pockets

Fabric: 75% Polyester 25% Viscose - 175g/m²

Colour: Patterned

Sizes: XS-3XL



ISM 0702

Ring Women's Top Uniform

- V neck
- Short sleeved
- Front pockets with accessories
- Pocket on right chest

Fabric: 75% Polyester 25% Viscose - 175 g/m²

Colour: Patterned

Sizes: XS-3XL





CUSTOM PRODUCTION

KT07-01

Women's Classic Work Jacket

- Round collar
- Snap front
- Single pocket on chest
- Double pockets on the sides

Fabric: 50% Polyester 50% Cotton

Colour: Blue Striped

Sizes: 36-52

ISM 0710

Women's Classic Work Jacket with Buttons

- Round collar
- Button front
- Single pocket on chest
- Double pockets on the sides

Fabric: 50% Polyester 50% Cotton

Colour: Blue Striped

Sizes: 36-52



CUSTOM PRODUCTION

ISM 0712

Women's Work Jacket with Detailed Neck

- Shawl collar
- Button front
- Short sleeved
- Double pockets on the sides

Fabric: 50% Polyester 50% Cotton

Colour: White/Lilac

Sizes: 36-52



CUSTOM PRODUCTION

ISM 0711

Women's Work Jacket with Detailed Shoulders

- Round collar
- Button front
- Short sleeved
- Single pocket on chest
- Double pockets on the sides

Fabric: 50% Polyester 50% Cotton

Colour: White/Blue

Sizes: 36-52



CUSTOM PRODUCTION



ISM 0716

CUSTOM PRODUCTION

Women's Work Jacket with Piping

- Round collar
- Button front
- Short sleeved
- Double pocket in front
- Black Dec sewing on pockets and sleeves

Fabric: 50% Polyester 50% Cotton

Colour: White

Sizes: S-XXL

ISM 0717

CUSTOM PRODUCTION

Women's Work Jacket with Neckband

- Mandarin collar
- Button front
- Short sleeved
- Double pocket in front
- Black Dec sewing on pockets and sleeves

Fabric: 50% Polyester 50% Cotton

Colour: White

Sizes: S-XXL

Excellent efficiency for excellent comfort!



ISM 0718

CUSTOM PRODUCTION

Women's Work Jacket with Neckline

- Square collar
- Button front
- Short sleeved
- Double pocket in front
- Black Dec sewing on pockets and sleeves

Fabric: 50% Polyester 50% Cotton

Colour: White

Sizes: S-XXL

01 M007-17

Women's Short Sleeve Top Uniform

- Lace-up collar, collar with garni piping
- Front and Back body with handles, body-fitting form
- For comfortable movement; the upper part of the rear handles is gusseted and ends in the slit on the hips.
- Short sleeved, garni colour piping on the cuffs
- Concealed closure with front plastic teeth zipper
- Decorative barrack seams on front closure
- Large pockets on the front left and right
- Pen pocket in left pocket
- There is a compartment on the left chest for cockade use.

Fabric: 50% Cotton 50% Polyester - 170 g/m²

Colour: Royal Blue, White

Sizes: S-XXL



01 M007-12

Grey Striped Women's Jacket

- Body-fitting form
- Button front closure
- Short sleeved
- Pocket with accessory on left chest
- Pocket with accessory on both sides

Fabric: 65% Polyester 35% Viscose - 175 g/m²

Colour: Grey

Sizes: S-3XL





ISM 0713

Women's Work Jacket

- Button front
- Curved V neck
- Short sleeved
- Pen pocket on left chest
- Double pockets on the sides

Fabric: 50% Polyester
50% Cotton

Colour: White

Sizes: 36-52

CUSTOM PRODUCTION

01 M007-15

Pink Striped Women's Jacket

- V neck
- Button front closure
- Short sleeved
- Pocket with accessory on right chest
- Pocket with accessory on both sides

Fabric: 65% Polyester 35% Viscose - 175 g/m²

Colour: Pink

Sizes: S-3XL





ISM 0714

CUSTOM PRODUCTION

Women's Work Jacket with Yoke

- Front 2 buttons at the top, snap fasteners at the bottom
- Short sleeved
- Double pockets on the sides

Fabric: 50% Polyester 50% Cotton

Colour: White

Sizes: 36-52



01 M017-08

Daisy Detailed Gilet

- V neck
- Snaps on the sides
- Pocket on right side
- Daisy embroidery detail on chest and pocket

Fabric: 67% Polyester 33% Cotton

Colour: Burgundy, Grey, Blue

Sizes: One Size





CUSTOM PRODUCTION

01 M017-04

Gilet

- Body with white piping around
- Pocket in the front centre
- Velcro fasteners on the sides

Fabric: 65% Polyester 35% Viscose - 175 g/m²

Colour: Orange, Mint, White

Sizes: One Size



ISM 4323

Women's Work Vest with Pocket

- Front zipper
- Functional pockets on the front and back
- Nameplate on right chest

Fabric: 65% Polyester 35% Cotton

Colour: White/Grey

Sizes: S-3XL

ISM 0732

CUSTOM PRODUCTION

Three Coloured Women's Top Uniform

- Collar with snap fastener
- Short sleeved
- Side fabrics are made of microfiber polyester (dry fit). It provides ease of use with its flexibility and side slits.

Fabric: 65% Polyester 35% Cotton

Sizes: S-3XL



ISM 1011

CUSTOM PRODUCTION

Zipper Detailed Women's Work Trousers

- Front zipper
- Pipe trotters
- Semi Circular front pockets
- Pockets on the sides of the legs + phone pocket on the left
- Double pocket on the back
- Anti-wrinkle pad on knees

Fabric: 64% Polyester 33% Cotton 3% Elastane

Sizes: S-3XL





ISM 0137

CUSTOM PRODUCTION

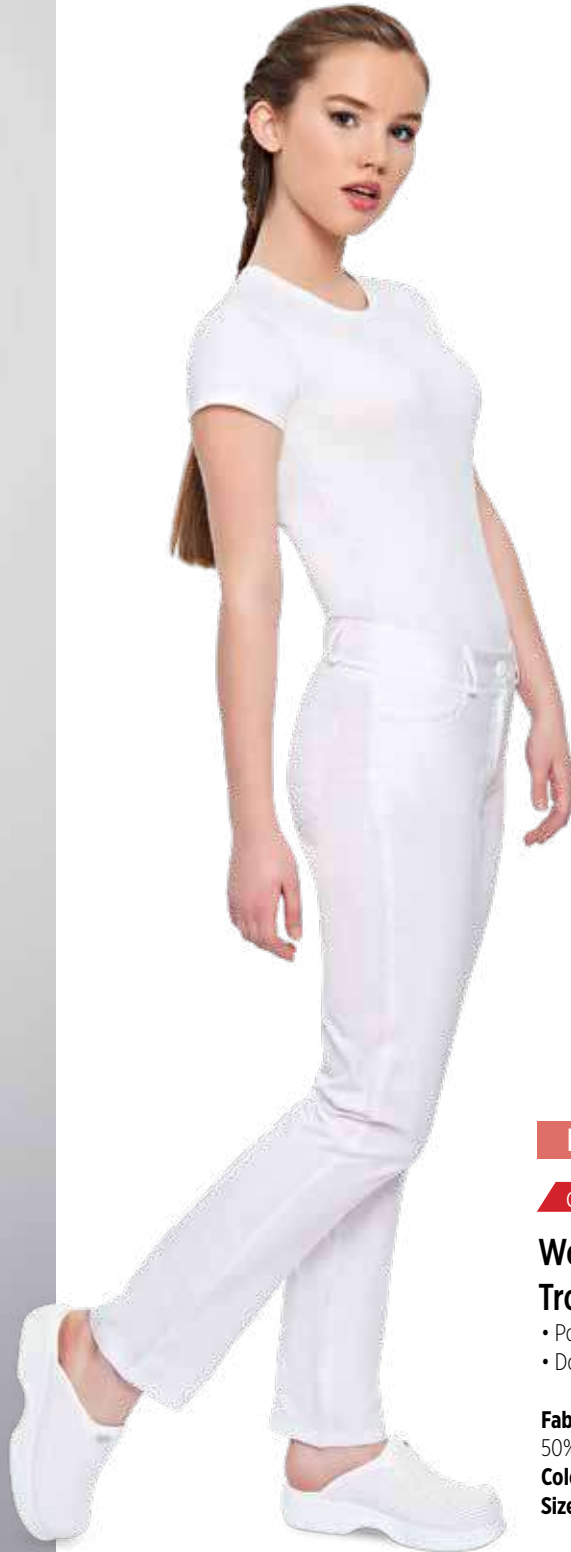
Women's Trousers with Cargo Pocket

- Front zipper
- Elastic back waist
- Pocket on the sides
- Double pocket on the back
- Cargo pocket with flap on right leg

Fabric: 50% Polyester 50% Cotton

Colour: White

Sizes: 36-52



ISM 1010

CUSTOM PRODUCTION

Women's Sportive Trousers

- Pockets on the sides
- Double pocket on the back

Fabric: 50% Polyester
50% Cotton

Colour: White

Sizes: 36-52



ISM 0919

CUSTOM PRODUCTION

Women's Sportive Trousers

- Elastic waist (5 cm)
- Pockets on the sides
- Pocket on right leg

Fabric: 50% Polyester 50% Cotton

Colour: Grey

Sizes: 36-52



01 M030-03

Women's Trousers with Elastic Waist

- Elastic waist
- Pockets on the sides

Fabric: 65% Polyester
35% Viscose - 170 g/m²

Colour: White, Pink, Green, Blue, Light Blue, Royal Blue, Navy

Sizes: S-3XL



CHEFS JACKET



01 M032-12

Chefs Jacket

- Concealed snap front closure
- Flap pocket on left chest
- Pocket on left sleeve

Fabric: 65% Polyester 35% Cotton - 200 g/m²

Colour: White

Sizes: 46-60



ISM 0034

Chefs Jacket with Snaps

- Snap front closure
- Pocket on left sleeve

Fabric: 65 % Polyester 35% Cotton - 200 g/m²

Colour: White, Black

Sizes: 46-60



01 M009-10

Trousers with Crowbar Pattern

- Classic model
- Pockets on the sides
- Single pocket on the back

Fabric: 67% Polyester 33% Viscose - 235 g/m²

Colour: Black/White

Sizes: 38-60



01 M009-15

Striped Chefs Trousers

- Classic model
- Elastic waist
- Pockets on the sides
- Single pocket on the back

Fabric: 65 % Polyester 35% Viscose - 175 g/m²

Colour: Grey/Black Striped

Sizes: 38-60



01 M032-04

White Chefs Jacket

- Double row of buttons on the front
- Pocket on left sleeve

Fabric: 65 % Polyester 35% Cotton - 200 g/m²

Colour: White

Sizes: 44-60



01 M010-03

Elasticated Chefs Trousers

- Elastic waist, cord + stopper
- Pockets on the sides

Fabric: 67% Polyester 33% Viscose - 235 g/m²

Colour: Gingham

Sizes: S-XXL

A modern jacket with soft, lightweight, and stretchy fabric for ultimate comfort!

ISM 0027

Work Trousers with Elastic Waist

It is very comfortable with its elastic waist structure!

- Its quality fabric has a full stance, is easy to iron and does not cause knee marks
- Pockets on the sides
- No pocket on the back

Fabric: 65% Polyester 35% Cotton - 200 g/m²

Colour: Black, White

Sizes: XS-XXL



ISM 3200

Gourmet Chef Jacket



Our brand-new chef jacket with lightweight, stretchy, and dry-touch technology fabric not only offers you freedom of movement and coolness but will also catch your eye with its stylish design.

- Front with metal snaps,
- Foldable cuffs,
- Pocket on the right sleeve,
- For superior comfort, details made from DRYTOUCH fabric, which is flexible, comfortable, breathable, and quick drying, on the back and under the arms.

Fabric: %53 Cotton, %44 Polyester, %3 Lycra

Colour: White, Black

Size: XS-3XL



ISM 1803

Barista Apron

- Useful double pocket
- Hanging buckle on right side
- Adjustable stylish leather straps

Fabric: %100 Cotton

Sizes: One Size (70x100 cm)



ISM 1804

Chefs Apron

- Large pockets with suede details
- Adjustable stylish leather straps

Fabric: 65% Polyester 35% Cotton - 195 g/m²

Sizes: One Size (70x100 cm)

01 M018-14

Jean Bib Apron

- Neck strap (adjustable, with buckle)
- Tie at the waist
- Small pocket over front chest pocket
- Front right and left pockets
- Rivet is used as an accessory on the pocket edges

Fabric: %100 Cotton - 220 g/m²

Colour: Blue

Sizes: One Size (70x100 cm)



ISM 1805

Gourmet Apron

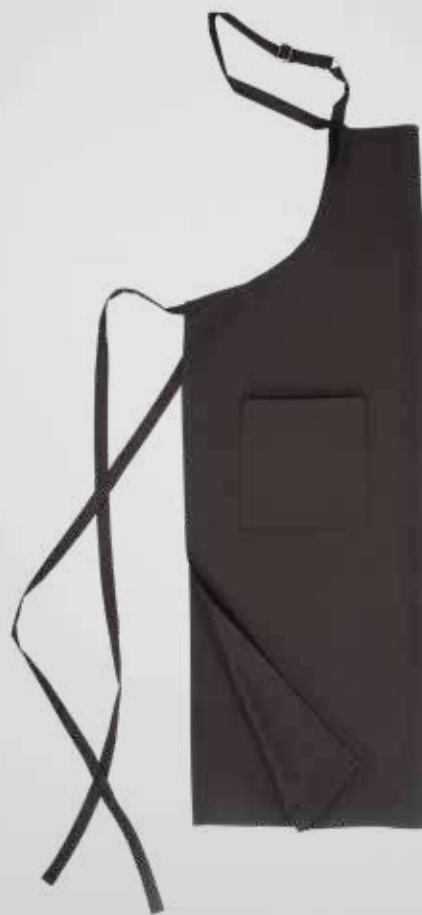
- 100% cotton durable denim fabric
- Contrast-colored sporty stitching
- Convenient pockets with metal accessories, multifunctional pocket on the left chest Polyester apron straps with leather details

Fabric: %100 Cotton

Colour: Black

Size: One Size (70x100 cm)





01 M018-18

Bib Apron with Pocket

- Neck strap (length adjustable)
- Tie at the waist
- Single pocket on right side

Fabric: 65% Polyester 35% Cotton - 195 g/m²

Colour: White, Royal Blue, Burgundy, Green, Black, Red

Sizes: One Size

01 M018-07

Striped Bib Apron 70*100 cm

- Neck strap (adjustable snap fastener)
- Tie at the waist
- Pocket on right side
- Measures are 70 x 100 cm

Fabric: 65% Polyester 35% Viscose - 187 g/m²

Colour: Blue Striped, Black Striped



01 M018-20

Half Apron with Pocket

- Tie at the waist
- Single pocket on the front

Fabric: 65% Polyester 35% Cotton - 195 g/m²

Measurement: 100 cm x 70 cm

Colour: Black, White, Red, Green, Royal Blue



01 M024-02

Chefs Scarf

Fabric: 55% Cotton
45% Polyester - 115 g/m²



01 M056-03

Chefs Pleated Hat Long

Fabric: 65% Polyester 35% Cotton - 200g/m²



01 M055-02

Women's Bonnet

Fabric: 65% Polyester
35% Viscose - 170 g/m²

Colour: White, Blue, Light Blue,
Navy, Pink



03 T004-10

Unisex Eva Air Slippers

- Suitable for unisex use
- Eva air slippers, made from Eva material, are very comfortable and flexible
- Ideal for use at the beach, pool, garden, and in hospitals
- Antibacterial
- Easy to clean
- Has an anatomical structure

Colour: White, Navy

Size: 36-45





01 M048-04

Men's Long Sleeve Oxford Shirt

- Regular cut
- Pocket on left chest

Fabric: 70% Cotton 30% Polyester - 130 g/m²

Colour: White, Blue

Sizes: XS-3XL



01 M009-03

Men's Classic Trousers-Summer

- Classic Model
- Pockets on the sides
- Single fillet pocket with button on right back

Fabric: 65% Polyester 35% Viscose- 205 g/m²

Colour: Grey, Navy, Black

Sizes: 38-60

01 M048-02

Men's Shirt Long Sleeve

- Classic model
- Front button
- Pocket on left chest

Fabric: 55% Cotton 45% Polyester - 115 g/m²

Colour: Black, White, Grey, Blue

Sizes: XS-3XL



01 M048-05

Men's Shirt- Winter

- Regular cut
- Pocket on left chest

Fabric: 65% Polyester 35% Viscose- 170 g/m²

Colour: Grey, Navy

Sizes: S-XXL





01 M048-09

Men's Short Sleeve Shirt

- Regular cut
- Pocket on left chest

Fabric: 55% Cotton 45% Polyester - 115 g/m²

Colour: White, Blue, Grey

Sizes: XS-3XL



01 M009-02

Men's Classic Trousers-Winter

- Classic Model
- Pockets on the sides
- Single fillet pocket with button on right back

Fabric: 67% Polyester 33% Viscose - 260 g/m²

Colour: Grey, Navy, Black

Sizes: 38-60

01 M048-07

Women's Long Sleeve Shirt

- Body-Fitting form
- Pocket on right chest

Fabric: 55% Cotton 45% Polyester - 115 g/m²

Colour: White, Blue

Sizes: S-XXL



01 M048-12

Women's Short Sleeve Shirt

- Body-Fitting form
- Pocket on right chest

Fabric: 55% Cotton 45% Polyester - 115 g/m²

Colour: White, Blue

Sizes: S-XXL



01 M009-17

Women's Classic Stretch Trousers

- Form fitting with lycra
- Zippered front closure with 2 buttons

Fabric: 64% Polyester 33% Viscose
3% Lycra -245 g/m²

Colour: Black, Navy

Size: 36-44

WORK SHOES



YDS T001-73

ATOM 61 NV | S1

Material: Leather

Lining: Textile

Nose Protection: Policap/Composite Nose

Sole: SRC Superior Slip Resistance, Antistatic

Standard: EN ISO 20345

Weight: 500g



YDS T001-34

UL 100 | S3

Material: Leather

Lining: Textile

Nose Protection: Policap/Composite Nose

(Non-Metallic)

Sole: FLYWEIGHT Light Sole, SRC Superior Slip Resistance, Antistatic

Midsole: L-PROTECTION Midsole

Standard: EN ISO 20345

Weight: 640g



YDS T001-53

FLPP 1606 | S1P

Material: Suede Leather

Lining: Textile

Nose Protection: Policap/Composite Nose (Non-Metallic)

Sole: Oil Resistant, SRC Superior Slip Resistance, Antistatic

Midsole: Kevlar® Midsole

Standard: EN ISO 20345

Weight: 520g



YDS T001-49

KPSP 1147 | S1

Material: Leather

Lining: Textile

Nose Protection: Steel Nose

Sole: Oil Resistant, SRC Superior Slip Resistance, Antistatic

Standard: EN ISO 20345

Weight: 550g



YDS T001-32

GPP 05 GH NV | S1

Material: Leather

Lining: Textile

Nose Protection: Steel Nose

Sole: SRC Superior Slip Resistance, Antistatic

Standard: EN ISO 20345

Weight: 550g



YDS T001-63

GPP 05 GH ESD | S1

Material: Breathable Leather

Lining: Textile

Nose Protection: Steel Nose

Sole: Static electricity discharge feature, Double Density Injection Sole Technology, Antistatic

Standard: EN ISO 20345

Weight: 550g





YDS T001-68

FLPP 1605 | S1P

Material: Leather

Lining: Textile

Nose Protection: Policap/Composite Nose (Non-Metallic)

Midsole: Kevlar® Midsole

Standard: EN ISO 20345

Weight: 550 gr



YDS T001-37

EL 200 K | S2

Material: Leather

Lining: Textile

Nose Protection: Steel Nose

Sole: SRC Superior Slip Resistance, Antistatic

Standard: EN ISO 20345

Weight: 550g



YDS T001-10

EL 200 DKY | S3

Material: Leather

Lining: Textile

Nose Protection: Steel Nose

Sole: Oil Resistant, SRC Superior Slip Resistance, Antistatic

Midsole: Kevlar® Midsole

Standard: EN ISO 20345

Weight: 650g



YDS T001-80

FLPP 1601 | S1P

Material: Leather

Lining: Textile

Nose Protection: Policap/Composite Nose (Non-Metallic)

Sole: Oil Resistant, SRC Superior Slip Resistance, Antistatic

Midsole: Kevlar® Midsole

Standard: EN ISO 20345

Weight: 550g



WORK BOOTS



YDS T002-09

UL 100 | S3

Material: Leather

Lining: Textile

Nose Protection: Policap/Composite Nose (Non-Metallic)

Sole: FLYWEIGHT Light Sole, SRC Superior Slip Resistance, Antistatic

Midsole: L-PROTECTION Midsole

Standard: EN ISO 20345

Weight: 640g



YDS T002-13

UL 170 | S3

Material: Leather

Lining: Textile

Nose Protection: Policap/Composite Nose (Non-Metallic)

Sole: Oil Resistant, SRC Superior Slip Resistance, Antistatic

Midsole: Kevlar® Midsole

Standard: EN ISO 20345

Weight: 620g



PU / TPU

SRC
NON-SLIP
SOLE

PU

SRA
NON-SLIP
SOLE

PU

SRA
NON-SLIP
SOLE



03 T003-09

Polly Boots Vega S5 Steel Toe & Sole



PU / TPU
SRC
NON-SLIP
SOLE

Antistatic	Breathable	Waterproof	Oil-Resistant Sole	Shock Absorption

03 T003-12

Polly Boot Galaxy Rigger G601



Antistatic	Breathable	Waterproof	Oil-Resistant Sole	Shock Absorption

03 T003-11

Polly Boots Without Steel



PU
SRA
NON-SLIP
SOLE

Antistatic	Waterproof	Oil-Resistant Sole	Shock Absorption



EN ISO 20347
EN ISO 20345.S4
EN ISO 20345.S5
EN ISO 20347.05

Size: 36-49

CE | 22.000 V
 -25 °C

KNEE PADS



Our revolutionary knee pads with integrated gel for pressure distribution and absorption. They are lightweight and equipped for long-lasting comfort. The non-slip surface is suitable for all work environments.

PW KP30-01

Protective Gel Knee Pad

In a survey of 100 workers, more than 90% opted for innovative knee pads combined with gel that absorbs and disperses pressure from hours of kneeling! It is lightweight but covered with an abrasion resistant PVC sheath for extended wear. Its surface made for comfort is suitable for all working environments. Adjustable neoprene strap ensures comfort and safety.

- Adjustable straps for safe use
- Very comfortable joint protective gel supports
- Ergonomically tested and designed parts that do not disturb the user
- Long-lasting with its strong and durable outer structure

Material: PVC Shell, Nylon, EVA Foam, Neoprene
Certificate: EN 14404:2004+A1:2010 Type 1 (level 0)
Sizes: Standard



PW S156-01

Protective Knee Pad - Work Knee Pad

Provides comfort and safety in knee protection. This ergonomically designed knee pad is designed to offer you protection and comfort for long hours. It never bothers you while walking.

- Ergonomic structure that fully wraps your knees
- Do not interfere while walking

Material: EVA Foam

Certificate: EN 14404:2004+A1:2010 Type 2 (Level 0)

Sizes: Standard



PW KP20-01

Protective Knee Pad Lightweight

- Lightweight design that wraps around the knee
- Hard outer shell that protects against rough and cutting surfaces
- Breathable infrastructure prevents sweating
- Breathable inner fabric that provides air circulation
- Adjustable straps for safe use

Material: Nylon, EVA Foam, Plastic

Certificate: EN 14404:2004+A1:2010 Type 1 (level 0)

Sizes: Standard



CUSTOM DESIGN AND PRODUCTION FOR YOU

We provide you with comprehensive solutions for your project, handling planning, coordination, production, and delivery all in one. Short delivery times and a high quality standard are our top priorities.

For over 41 years, our production has been specialized in custom collections and private-label products.

- *Corporate Fashion and Private-Label*
- *Customizable solutions for your projects*
- *Professional implementation of your requirements*
- *Exclusive production under one roof*
- *Enhancements through embroidery or printing*
- *Special productions – even for smaller quantities*



We collaboratively plan your requirements by taking note of your preferences. Your inquiry is processed in our marketing department, and you will also receive a graphical representation of your request. Once all the wishes are incorporated, we prepare a production sample for your approval prior to the mass production phase.

At every stage of production, we seek your approval, whether it's for details like printing or embroidery colors, or label design.

The goods are coordinated and delivered directly to you or your customer. Please contact our sales team directly with your inquiry or send us an email at:

Phone: +49 211 301 55 890 | Email: info@ismont.de



PRINTING - EMBROIDERY APPLICATIONS

Quick, quality, and fair prices!

Enhance your company's visibility and improve its image with a consistent and professional appearance without incurring high additional costs. We embroider, print, or flock all products according to your preferences.

Since costs are based on the complexity (depending on the desired design), we'd be happy to provide you with a customized quote.

Please send us an email at info@ismont.de for this purpose.

IMPORTANT:

For company logos and non-standard fonts, we always require a reproduction-ready template, such as a letterhead via mail or a file via email. Fax templates and copies are usually insufficient.

Please note that customized embroidered/printed items are not eligible for returns!





Textile Production & Marketing Co.



Germany / Düsseldorf

Hüttenstr.1 40215 /Düsseldorf

Tel: +49 211 30155890

Fax: +49 211 30039658

www.ismont.de

info@ismont.de



Headquarters

Küçük Çamlıca Mah.

Adilbey Sk.No:4 34696

Üsküdar/İSTANBUL/TÜRKİE

Tel: +90 216 472 73 00

Fax: +90 216 472 73 11-12

www.ismont.com.tr

ismont@ismont.com.tr



Let's stay in touch!



facebook.com/ismont.de



twitter.com/ismonttr



instagram.com/ismontde



www.linkedin.com/company/ismont-textil-berufsbekleidungs-gmbh



www.youtube.com/İşMontİşElbiseleriTurkiye



xing.com/pages/ismont-textil-berufsbekleidung-gmbh

ONLINE
SHOP

www.ismont.de

